

The Long and Short of it – Weekly Update

Week in review:

Stock markets moved higher last week with all 3 major stock indexes posting gains. The Nasdaq Composite Index strongly outperformed the S&P 500 Index and the Dow Jones Industrial Average, boosted by strong tech stock performance. Risk-on sentiment combined with growing expectations inflation may have peaked drove stock prices higher through Thursday. Wednesday's FOMC minutes release confirmed the Fed's commitment to fight inflation even at the risk of recession, spurring stock prices - especially tech stock prices – higher as inflation concerns mitigated. Friday's stronger-than-expected Non-Farm payroll report somewhat renewed inflation concerns and increased expectations of aggressive Fed tightening but also contributed to the belief the economy may be strong enough to avoid a recession even in the face of concerted Fed action. The 10-year Treasury rate increased 19bps last week driven almost entirely by higher real rates. 10-year inflation expectations were almost unchanged at 2.37%. At week's end, the S&P 500 Index gained 1.9% to 3,899.38, the Nasdaq Composite Index rose 4.6% to 11,635.31, the Dow Jones Industrial Average increased 0.8% to 31,339.20, the 10-year U.S. Treasury rate increased 19 bps to 3.08% and the U.S. dollar (as measured by the ICE U.S. Dollar index - DXY) strengthened 1.7%.

European stock markets also ended the week higher bouncing off Tuesday's lows. Higher energy prices initially bolstered oil and gas stocks moving both the STOXX 600 and FTSE 100 Indexes higher Monday. Tuesday's reversal in oil prices (Brent crude oil prices fell more than 9%) combined with striking offshore workers in Norway moved oil and gas stock prices sharply lower while ramping up recession fears on the back of surging natural gas prices (as a result of the striking workers in Norway), pushing both the STOXX 600 and FTSE 100 Indexes over 2% lower. Stock prices rose the remainder of the week, buoyed by a number of factors including Norway's Labour Ministry interceding to end the strike, rising oil and copper prices, UK PM Johnson resigning, a weaker euro and British pound and rallying U.S. stock markets. Friday's stronger-than-expected U.S. Non-Farm Payroll report increased concerns of continued aggressive Fed tightening but also added to sentiment that the U.S. economy may be strong enough to avoid recession, supporting European stock markets. The 10-year UK government rate and the 10-year Bund rate moved higher last week with both increasing 11 bps. At week's end, the FTSE 100 Index increased 0.4% to 1,196.24, the STOXX 600 Index rose 2.5% to 417.12, the 10-year UK government rate rose 16 bps to 2.24%, and the euro and the British pound weakened 2.4% and 0.6%, respectively, both with respect to the U.S. dollar.

Week ahead:

IT - Retail Sales (Mon), DE - ZEW Survey (Tue), UK, EZ - Industrial Production; UK - GDP; US, DE, FR - CPI; US - Beige Book (Wed), US - Jobless Claims, PPI (Thu), US - Retail Sales, Industrial Production, Consumer Sentiment (Fri)

Top performing ETPs over the week

	3x Long ETPs		3x Short ETPs	
UK	+3x AstraZeneca (3LAZ)	+8.1 %	-3x BAE Systems (3SBA)	+9.8%
US	+3x MicroStrategy (3LMI)	+118.6%	-3x PayPal (3SPP)	-7.3%
EU	+3x STMicroelectronics (3LST)	+17.4%	-3x Enel (3SNL)	+2.0%

Past performance is not a reliable indicator of future results. The value of an investment may go down as well as up and can result in losses, up to and including a total loss of the amount initially invested. All ETP performance figures are inclusive of fees and other adjustments. Returns measured in currency of underlying stock.

Weekly performance and moving averages – Underlying UK stocks

Underlying stock	Closing price 8 Jul 2022	Weekly change	MA 200d	MA 50d	High - 52w	Low - 52w	Price vs 52w High
AstraZeneca	11,044.00	-0.1%	9,335.40	10,400.58	11,170.00	8,029.00	-1.13%
BAE Systems	809.80	-2.1%	653.35	770.81	847.20	517.40	-4.41%
Barclays	151.96	-3.1%	177.63	156.15	219.60	140.06	-30.80%
BP	386.55	-2.8%	374.55	410.23	456.00	275.85	-15.23%
Diageo	3,537.50	-1.0%	3,733.13	3,670.26	4,110.00	3,282.50	-13.93%
Glencore	431.35	-6.3%	420.90	481.28	548.30	279.13	-21.33%
Lloyds Banking Group	42.20	-1.9%	47.36	43.88	55.96	38.10	-24.59%
Rio Tinto	4,835.00	-5.2%	5,235.43	5,390.05	6,290.51	4,317.97	-23.14%
Rolls-Royce	87.13	3.5%	110.94	84.91	150.48	77.89	-42.10%
Royal Dutch Shell A	2,043.50	-6.5%	1,929.71	2,243.29	2,459.00	1,324.00	-16.90%
Vodafone	128.46	1.5%	121.25	125.13	141.60	106.30	-9.28%

3x Long ETP performance U.K. stocks

Underlying stock	Ticker	4-Jul	5-Jul	6-Jul	7-Jul	8-Jul	1 Week	Last 20 days
AstraZeneca	3LAZ	1.45%	-0.24%	4.92%	0.70%	1.07%	8.07%	21.73%
BAE Systems	3LBA	-0.92%	-11.28%	4.89%	-0.53%	-2.44%	-10.53%	19.11%
Barclays	3LBC	4.51%	-15.62%	-1.25%	8.47%	1.90%	-3.74%	-18.75%
BP	3LBP	13.15%	-21.12%	-3.73%	13.73%	0.84%	-1.46%	-1.30%
Diageo	3LDO	-1.13%	1.02%	8.88%	-7.70%	1.59%	1.97%	-2.52%
Glencore	3LGL	5.84%	-24.00%	6.31%	18.20%	-1.33%	-0.28%	-16.00%
Lloyds Banking Group	3LLL	1.70%	-9.13%	-0.42%	7.14%	-0.70%	-2.09%	-12.08%
Rio Tinto	3LRI	-0.03%	-12.06%	2.97%	11.02%	-1.56%	-1.06%	-12.55%
Rolls-Royce	3LRR	29.22%	-50.00%	0.00%	0.00%	54.24%	-0.35%	-22.88%
Royal Dutch Shell A	3LRD	11.49%	-25.50%	-6.17%	9.01%	1.43%	-13.83%	-9.08%
Vodafone	3LVO	3.01%	-3.91%	-0.71%	1.69%	2.39%	2.34%	3.45%

3x Short ETP performance U.K. stocks

Underlying stock	Ticker	4-Jul	5-Jul	6-Jul	7-Jul	8-Jul	1 Week	Last 20 days
AstraZeneca	3SAZ	-1.65%	0.27%	-4.92%	-0.57%	-1.18%	-7.86%	-20.30%
BAE Systems	3SBA	0.82%	11.47%	-5.14%	0.68%	2.33%	9.82%	-19.39%
Barclays	3SBC	-4.66%	15.38%	1.33%	-8.55%	-1.67%	0.23%	13.89%
BP	3SBP	-13.10%	21.01%	3.47%	-13.42%	-1.02%	-6.75%	-8.79%
Diageo	3SDO	1.09%	-1.12%	-8.81%	7.59%	-1.58%	-3.47%	-1.32%
Glencore	3SGL	-4.68%	22.86%	-6.98%	-17.50%	0.67%	-9.52%	3.82%
Lloyds Banking Group	3SLL	-1.79%	9.22%	0.44%	-7.37%	0.73%	0.53%	9.64%
Rio Tinto	3SRI	0.07%	12.08%	-3.02%	-11.11%	1.46%	-1.90%	7.93%
Rolls-Royce	3SRR	-1.66%	25.71%	-11.39%	-11.49%	-6.60%	-9.44%	-14.79%
Royal Dutch Shell A	3SRD	-11.64%	25.37%	6.35%	-8.96%	-1.56%	5.59%	-2.76%
Vodafone	3SVO	-3.09%	3.87%	0.67%	-1.71%	-2.42%	-2.81%	-4.44%

Data and charts

All performance data to 08 July 2022. Data and charts sourced from Bloomberg, unless otherwise indicated.

Weekly performance and moving averages – Underlying U.S. stocks

Underlying stock	Closing price 8 Jul 2022	Weekly change	MA 200d	MA 50d	High - 52w	Low - 52w	Price vs 52w High
Alibaba	120.90	4.2%	121.09	99.42	216.60	73.28	-44.18%
Alphabet	2,387.07	9.8%	2,650.14	2,263.61	3,029.06	2,038.03	-21.19%
Amazon	115.54	5.5%	150.44	114.64	188.61	101.35	-38.74%
AMD	79.35	7.7%	114.72	90.73	164.44	71.61	-51.75%
Apple	147.04	5.8%	158.27	145.14	182.90	129.08	-19.61%
Coinbase	60.29	22.9%	193.51	72.23	368.89	40.83	-83.66%
Meta Platform	170.88	6.8%	260.73	184.57	384.33	154.27	-55.54%
Microsoft	267.66	3.1%	298.11	264.57	349.65	241.52	-23.45%
MicroStrategy	221.28	32.7%	471.18	228.38	890.00	134.27	-75.14%
Moderna	176.23	17.5%	209.83	139.33	497.00	115.64	-64.54%
Netflix	186.98	3.9%	429.61	186.26	700.50	162.81	-73.31%
NIO	22.60	5.8%	26.61	18.12	47.38	11.67	-52.30%
NVIDIA	158.38	9.1%	235.89	173.39	346.10	140.55	-54.24%
Palantir	10.17	9.7%	15.53	8.93	29.29	6.44	-65.28%
PayPal	73.43	2.9%	149.62	79.84	309.76	67.64	-76.29%
Spotify	104.24	6.9%	179.18	104.54	305.55	89.03	-65.88%
Square	67.02	4.9%	146.61	79.32	289.23	56.01	-76.83%
Tesla	752.29	10.3%	910.27	742.77	1,243.25	620.50	-39.49%
UBER	22.34	4.7%	35.43	24.12	49.26	19.90	-54.65%
Zoom	119.81	8.0%	163.24	104.74	404.25	79.30	-70.36%

2x and 3x Long ETP performance U.S. stocks

Underlying stock	Ticker	5-Jul	6-Jul	7-Jul	8-Jul	1 Week	Last 20 days
Alibaba	3LAA	12.84%	-2.09%	8.45%	-3.71%	15.38%	44.76%
Alphabet	3LAL	12.42%	3.45%	11.01%	1.42%	30.94%	19.66%
Amazon	3LZN	10.72%	2.18%	5.23%	-2.06%	16.59%	15.65%
AMD	3LAM	8.33%	1.05%	15.97%	0.14%	27.13%	-20.37%
Apple	3LAP	5.60%	2.86%	7.18%	1.40%	18.05%	26.42%
Coinbase	3LCO	41.71%	-19.68%	33.63%	14.72%	74.48%	22.47%
Meta Platform	3LFB	15.22%	2.80%	4.26%	-2.30%	20.65%	27.21%
Microsoft	3LMS	3.71%	3.82%	2.45%	-0.84%	9.37%	16.62%
MicroStrategy	3LMI	40.31%	1.43%	50.03%	2.36%	118.55%	76.55%
Moderna	3LMO	13.36%	8.24%	24.40%	6.61%	62.71%	104.93%
Netflix	3LNF	9.81%	-2.96%	8.47%	-3.66%	11.36%	7.87%
NIO	3LNI	11.40%	-18.29%	24.02%	1.30%	14.37%	-4.87%
NVIDIA	3LNV	9.01%	3.30%	14.41%	-0.40%	28.32%	-13.01%
Palantir	3LPA	28.37%	-7.64%	11.86%	-0.35%	32.17%	32.33%
PayPal	3LPP	14.83%	-4.25%	7.60%	-6.48%	10.63%	-3.27%
Spotify	3LPA	28.37%	-7.64%	11.86%	-0.35%	32.17%	29.02%
Square	3LSQ	15.52%	-7.50%	17.14%	-7.09%	16.29%	22.34%
Tesla	3LTS	7.55%	-1.74%	16.56%	7.60%	32.53%	15.98%
UBER	3LUB	16.48%	-13.61%	17.28%	-5.30%	11.75%	6.21%
Zoom	2LZM	19.38%	-5.15%	6.52%	-1.60%	18.69%	4.44%

3x Short ETP performance U.S. Stocks

Underlying stock	Ticker	5-Jul	6-Jul	7-Jul	8-Jul	1 Week	Last 20 days
Alibaba	3SAA	-8.88%	3.00%	-8.03%	3.62%	-10.56%	-39.54%
Alphabet	3SAL	-12.45%	-3.46%	-11.02%	-1.43%	-25.87%	-22.24%
Amazon	3SZN	-10.76%	-2.19%	-5.24%	2.04%	-15.59%	-20.60%
AMD	3SAM	-4.30%	-0.13%	-15.54%	-0.22%	-19.45%	6.41%
Apple	3SAP	-5.65%	-2.88%	-7.19%	-1.41%	-16.15%	-23.62%
Coinbase	3SCO	-37.74%	20.59%	-33.21%	-14.81%	-57.29%	-64.13%
Meta Platform	3SFB	-15.27%	-2.81%	-4.27%	2.29%	-19.36%	-29.55%
Microsoft	3SMS	-3.75%	-3.83%	-2.46%	0.84%	-8.95%	-17.19%
MicroStrategy	3SMI	-36.42%	-0.54%	-49.85%	-2.47%	-69.07%	-74.12%
Moderna	3SMO	-9.40%	-7.33%	-23.98%	-6.70%	-40.45%	-59.07%
Netflix	3SNF	-9.87%	2.94%	-8.49%	3.64%	-11.99%	-16.94%
NIO	3SNI	-11.54%	18.25%	-24.06%	-1.34%	-21.63%	-11.18%
NVIDIA	3SNV	-9.10%	-3.33%	-14.43%	0.38%	-24.53%	2.46%
Palantir	3SPA	-24.40%	8.54%	-11.44%	0.26%	-27.14%	-41.26%
PayPal	3SPP	-10.81%	5.17%	-7.16%	6.41%	-7.34%	-9.48%
Spotify	3SPO	-20.91%	6.10%	-8.43%	4.47%	-19.72%	-24.07%
Square	3SSQ	-11.52%	8.42%	-16.72%	7.00%	-14.51%	-39.71%
Tesla	3STS	-7.67%	1.71%	-16.59%	-7.63%	-27.64%	-21.45%
UBER	3SUB	-16.60%	13.59%	-17.30%	5.28%	-17.53%	-19.93%
Zoom	2SZM	-15.33%	6.08%	-6.07%	1.53%	-14.34%	-13.80%

Data and charts

All performance data to 08 July 2022. Data and charts sourced from Bloomberg, unless otherwise indicated.

Weekly performance and moving averages – Underlying E.U. stocks

Underlying stock	Closing price 8 Jul 2022	Weekly change	MA 200d	MA 50d	High - 52w	Low - 52w	Price vs 52w High
Airbus	96.04	0.8%	107.93	101.86	121.10	88.91	-20.69%
AXA	21.61	-0.6%	25.09	22.94	29.09	20.34	-25.73%
BNP-Paribas	45.46	0.3%	55.42	49.91	68.07	43.07	-33.22%
Danone	53.59	0.5%	54.65	54.14	65.30	46.48	-17.93%
Enel	5.25	-1.1%	6.39	5.74	8.10	5.07	-35.14%
Eni	11.23	0.0%	12.86	13.00	14.85	9.33	-24.41%
Intesa Sanpaolo	1.76	-0.3%	2.22	1.90	2.92	1.66	-39.64%
L'Oreal	330.45	0.3%	366.00	322.66	433.65	300.45	-23.80%
LVMH	606.90	4.6%	649.64	577.41	758.50	535.00	-19.99%
Safran	99.42	4.5%	105.34	95.43	123.12	87.85	-19.25%
Sanofi	99.33	1.9%	92.35	98.78	106.08	80.51	-6.36%
Schneider Electric	117.24	5.4%	144.52	122.76	178.78	110.02	-34.42%
STMicroelectronics	30.83	5.9%	38.40	34.15	46.34	27.42	-33.46%
TotalEnergies	49.27	-1.8%	47.31	51.64	57.41	34.27	-14.18%
Unicredit	9.49	4.5%	11.31	9.77	15.93	7.75	-40.42%
Volkswagen	134.46	5.5%	167.84	144.69	220.30	120.56	-38.97%

3x Long ETP performance E.U. Stocks

Underlying stock	Ticker	4-Jul	5-Jul	6-Jul	7-Jul	8-Jul	1 Week	Last 20 days
Airbus	3LAR	-6.01%	-12.72%	11.26%	6.55%	4.02%	1.16%	-2.52%
AXA	3LAX	0.73%	-19.43%	4.61%	7.80%	5.44%	-3.50%	-15.33%
BNP-Paribas	3LBN	-0.27%	-9.13%	-3.06%	7.66%	6.05%	0.30%	-23.66%
Danone	3LDA	2.44%	-4.44%	3.57%	-1.72%	1.80%	1.44%	10.74%
Enel	3LNL	-1.84%	-11.60%	5.84%	5.03%	-0.64%	-4.15%	-12.86%
Eni	3LEN	7.19%	-17.39%	-2.11%	8.08%	4.88%	-1.74%	-21.96%
Intesa Sanpaolo	3LSP	-7.22%	-9.37%	1.21%	11.97%	2.98%	-1.87%	-20.32%
L'Oreal	3LOR	2.19%	-0.41%	14.69%	-3.20%	-11.74%	-0.28%	12.71%
LVMH	3LLV	2.83%	-6.96%	13.61%	4.79%	-0.26%	13.60%	29.78%
Safran	3LSA	-0.62%	-9.78%	11.33%	10.62%	2.27%	12.92%	10.68%
Sanofi	3LSN	2.45%	-3.60%	2.34%	4.26%	0.11%	5.48%	14.29%
Schneider Electric	3LSE	1.70%	0.63%	11.25%	-0.56%	2.89%	16.49%	5.88%
STMicroelectronics	3LST	-5.80%	-6.13%	15.03%	8.52%	6.35%	17.39%	-15.36%
TotalEnergies	3LTO	13.57%	-19.20%	-8.76%	10.93%	-0.64%	-7.72%	-10.36%
Unicredit	3LCR	0.16%	-8.53%	0.18%	19.76%	2.41%	12.57%	-24.95%
Volkswagen	3LVW	-1.16%	-14.58%	0.00%	14.63%	18.22%	14.41%	-26.41%

3x Short ETP performance E.U. Stocks

Underlying stock	Ticker	4-Jul	5-Jul	6-Jul	7-Jul	8-Jul	1 Week	Last 20 days
Airbus	3SAR	5.62%	12.89%	-10.96%	-6.54%	-4.33%	-5.07%	-5.12%
AXA	3SAX	-0.94%	19.35%	-4.50%	-7.78%	-5.46%	-1.56%	9.69%
BNP-Paribas	3SBN	0.22%	9.06%	3.08%	-7.76%	-6.08%	-2.40%	22.45%
Danone	3SDA	-2.50%	4.36%	-3.58%	1.65%	-1.80%	-2.07%	-12.13%
Enel	3SNL	1.73%	11.56%	-5.88%	-5.07%	0.60%	2.01%	8.75%
Eni	3SEN	-7.29%	17.35%	2.08%	-8.11%	-4.91%	-2.96%	18.34%
Intesa Sanpaolo	3SSP	7.12%	9.33%	-1.25%	-12.00%	-3.02%	-1.30%	16.95%
L'Oreal	3SOR	-2.14%	0.21%	-14.71%	3.20%	11.72%	-3.57%	-16.56%
LVMH	3SLV	-2.82%	6.83%	-13.42%	-5.17%	0.39%	-14.42%	-27.12%
Safran	3SSA	0.71%	9.72%	-11.71%	-10.75%	-2.03%	-14.69%	-16.74%
Sanofi	3SSN	-2.72%	3.85%	-2.47%	-4.22%	-0.17%	-5.79%	-17.30%
Schneider Electric	3SSE	-2.00%	-0.63%	-10.94%	0.18%	-2.70%	-15.45%	-9.75%
STMicroelectronics	3SST	5.47%	6.30%	-14.82%	-8.58%	-6.50%	-18.37%	9.32%
TotalEnergies	3STO	-13.84%	19.54%	8.65%	-10.62%	0.17%	0.19%	0.17%
Unicredit	3SCR	-0.29%	8.49%	-0.23%	-19.79%	-2.45%	-15.56%	20.28%
Volkswagen	3SVW	1.02%	14.61%	0.37%	-15.78%	-17.70%	-19.45%	17.35%

Data and charts

All performance data to 08 July 2022. Data and charts sourced from Bloomberg, unless otherwise indicated.



UK Blue Chips

Company	AstraZeneca (AZN)	AZN Performance	
Listed ETPs	3x Long AstraZeneca Daily ETP (3LAZ)	1 week	-0.1%
	3x Short AstraZeneca Daily ETP (3SAZ)	1 month	7.1%
		YTD	29.4%
Exchange	London Stock Exchange	Price vs 52w high	-1.1%

Chart with moving averages and RSI indicator



Consensus forecasts

	12/31/2022			12/31/2023		
	Net Income	EPS	DPS	Net Income	EPS	DPS
Current	\$10.2 b	\$6.62	\$2.95	\$12.0 b	\$7.75	\$3.08
1 month change	-2.1%	-1.4%	-0.7%	-0.4%	-3.6%	-0.5%

Company	BAE Systems (BA.)	BA. Performance	
Listed ETPs	3x Long BAE Systems Daily ETP (3LBA)	1 week	-2.1%
	3x Short BAE Systems Daily ETP (3SBA)	1 month	2.2%
		YTD	50.3%
Exchange	London Stock Exchange	Price vs 52w high	-4.4%

Chart with moving averages and RSI indicator

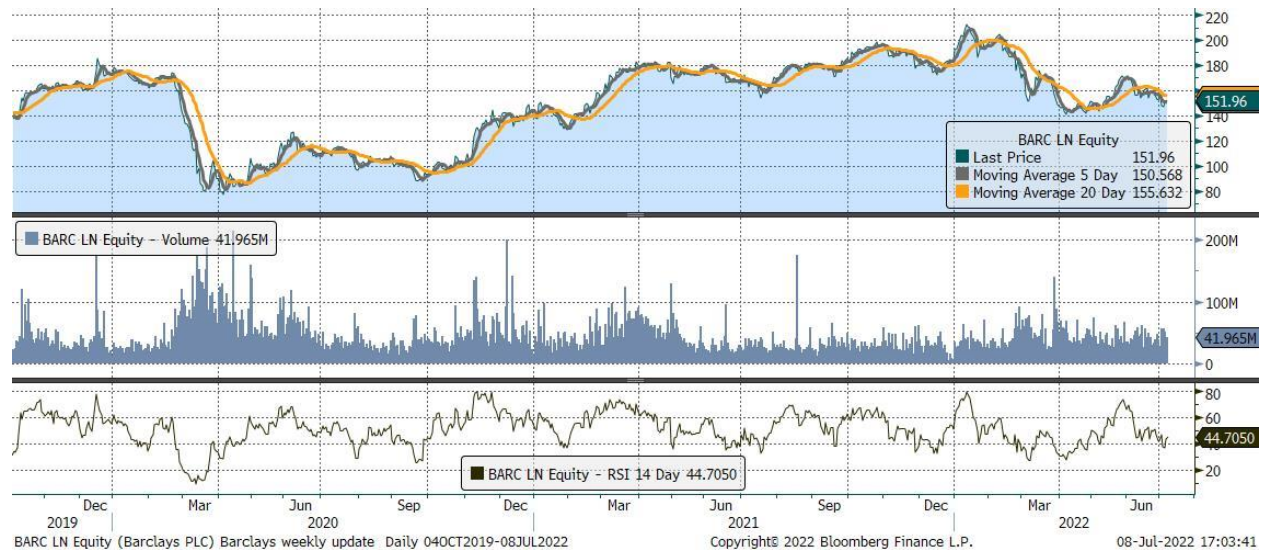


Consensus forecasts

	12/31/2022			12/31/2023		
	Net Income	EPS	DPS	Net Income	EPS	DPS
Current	£1.6 b	\$0.51	\$0.26	£1.7 b	\$0.54	\$0.28
1 month change	0.0%	-0.2%	0.0%	0.4%	-0.2%	0.0%

Company	Barclays (BARC)	BARC Performance	
Listed ETPs	3x Long Barclays Daily ETP (3LBC)	1 week	-3.1%
	3x Short Barclays Daily ETP (3SBC)	1 month	-9.8%
		YTD	-16.9%
Exchange	London Stock Exchange	Price vs 52w high	-30.8%

Chart with moving averages and RSI indicator



Consensus forecasts

	12/31/2022			12/31/2023		
	Net Income	EPS	DPS	Net Income	EPS	DPS
Current	\$4.8 b	\$0.29	\$0.08	\$4.8 b	\$0.30	\$0.09
1 month change	-1.3%	-0.3%	8.6%	0.9%	2.1%	3.4%

Company	BP (BP.)	BP. Performance	
Listed ETPs	3x Long BP Daily TP (3LBP)	1 week	-2.8%
	3x Short BP Daily ETP (3SBP)	1 month	-14.4%
		YTD	19.4%
Exchange	London Stock Exchange	Price vs 52w high	-15.2%

Chart with moving averages and RSI indicator



Consensus forecasts

	12/31/2022			12/31/2023		
	Net Income	EPS	DPS	Net Income	EPS	DPS
Current	£22.5 b	\$1.14	\$0.22	£16.8 b	\$0.92	\$0.22
1 month change	6.7%	7.8%	0.4%	5.2%	6.6%	0.4%

Company	Diageo (DGE)	DGE Performance	
Listed ETPs	3x Long Diageo Daily ETP (3LDO)	1 week	-1.0%
	3x Short Diageo Daily ETP (3SDO)	1 month	-1.7%
		YTD	-11.6%
Exchange	London Stock Exchange	Price vs 52w high	-13.9%

Chart with moving averages and RSI indicator



Consensus forecasts

	6/30/2022			6/30/2023		
	Net Income	EPS	DPS	Net Income	EPS	DPS
Current	£3.3 b	\$1.42	\$0.77	£3.7 b	\$1.61	\$0.84
1 month change	0.6%	0.6%	2.1%	2.1%	2.4%	1.1%

Company	Glencore (GLEN)	GLEN Performance	
Listed ETPs	3x Long Glencore Daily ETP (3LGL)	1 week	-6.3%
	3x Short Glencore Daily ETP (3SGL)	1 month	-19.8%
		YTD	17.3%
Exchange	London Stock Exchange	Price vs 52w high	-21.3%

Chart with moving averages and RSI indicator

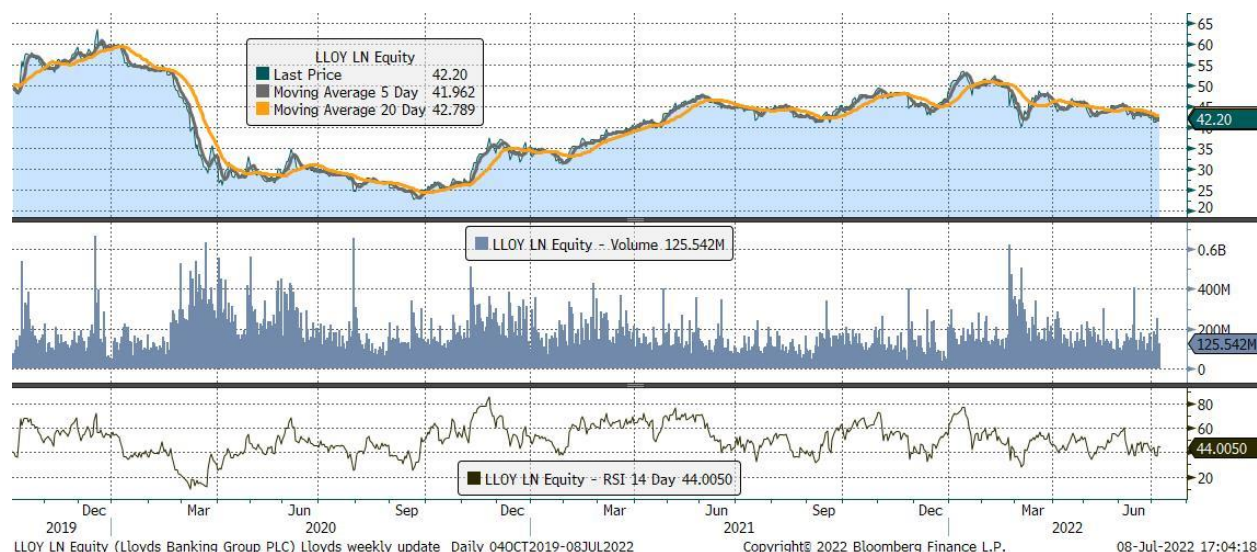


Consensus forecasts

	12/31/2022			12/31/2023		
	Net Income	EPS	DPS	Net Income	EPS	DPS
Current	\$19.0 b	\$1.39	\$0.70	\$12.6 b	\$0.96	\$0.66
1 month change	9.0%	2.8%	4.3%	5.2%	-0.1%	5.1%

Company	Lloyds Banking Group (LLOY)	LLOY Performance	
Listed ETPs	3x Long Lloyds Banking Group Daily ETP (3LLL)	1 week	-1.9%
	3x Short Lloyds Banking Group Daily ETP (3SLL)	1 month	-8.1%
Exchange	London Stock Exchange	YTD	-9.0%
		Price vs 52w high	-24.6%

Chart with moving averages and RSI indicator



Consensus forecasts

	12/31/2022			12/31/2023		
	Net Income	EPS	DPS	Net Income	EPS	DPS
Current	£4.5 b	\$0.06	\$0.02	£4.4 b	\$0.06	\$0.03
1 month change	2.7%	0.0%	0.0%	3.5%	0.0%	0.0%

Company	Rio Tinto (RIO)	RIO Performance	
Listed ETPs	3x Long Rio Tinto Daily ETP (3LRI)	1 week	-5.2%
	3x Short Rio Tinto Daily ETP (3SRI)	1 month	-20.3%
		YTD	5.2%
Exchange	London Stock Exchange	Price vs 52w high	-23.1%

Chart with moving averages and RSI indicator

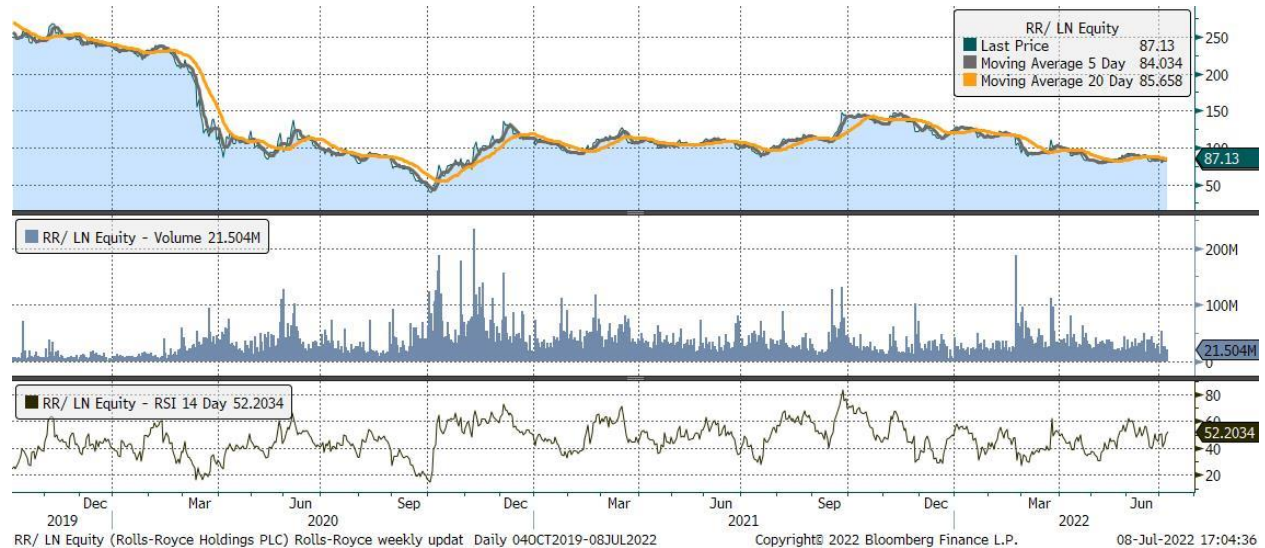


Consensus forecasts

	12/31/2022			12/31/2023		
	Net Income	EPS	DPS	Net Income	EPS	DPS
Current	\$17.5 b	\$10.91	\$8.12	\$13.4 b	\$8.40	\$6.08
1 month change	-7.9%	-8.1%	1.2%	-6.2%	-6.2%	-5.8%

Company	Rolls-Royce Holdings (RR.)	RR. Performance	
Listed ETPs	3x Long Rolls-Royce Daily ETP (3LRR)	1 week	3.5%
	3x Short Rolls-Royce Daily ETP (3SRR)	1 month	-5.7%
		YTD	-29.1%
Exchange	London Stock Exchange	Price vs 52w high	-42.1%

Chart with moving averages and RSI indicator

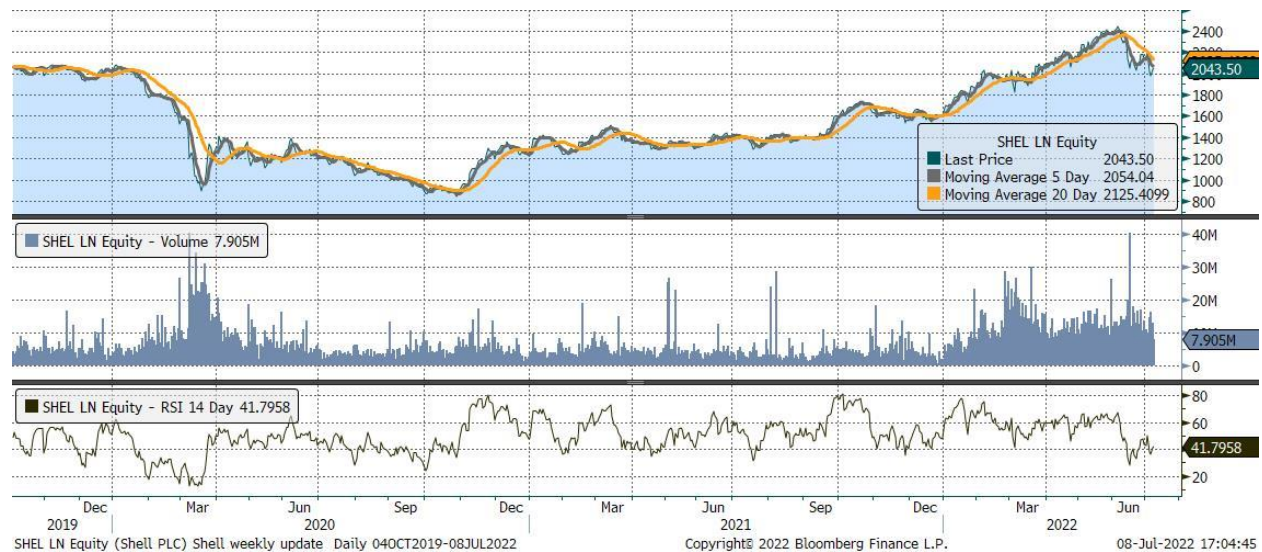


Consensus forecasts

	12/31/2022			12/31/2023		
	Net Income	EPS	DPS	Net Income	EPS	DPS
Current	£0.2 b	\$0.02	\$0.00	£0.4 b	\$0.04	\$0.01
1 month change	-23.4%	-26.1%	-	-10.7%	-12.0%	0.0%

Company	Shell Plc	RDSA Performance	
Listed ETPs	3x Long Royal Dutch Shell Daily ETP (3LRD)	1 week	-6.5%
	3x Short Royal Dutch Shell Daily ETP (3SRD)	1 month	-16.3%
		YTD	28.2%
		Price vs 52w high	-16.9%
Exchange	London Stock Exchange		

Chart with moving averages and RSI indicator



Consensus forecasts

	12/31/2022			12/31/2023		
	Net Income	EPS	DPS	Net Income	EPS	DPS
Current	\$37.9 b	\$5.72	\$1.01	\$32.7 b	\$5.11	\$1.06
1 month change	5.6%	17.5%	1.9%	3.5%	12.1%	1.3%

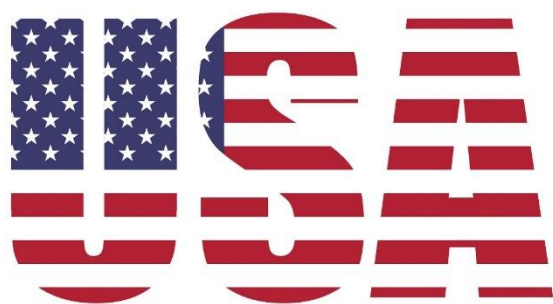
Company	Vodafone (VOD)	VOD Performance	
Listed ETPs	3x Long Vodafone Daily ETP (3LVO)	1 week	1.5%
	3x Short Vodafone Shell Daily ETP (3SVO)	1 month	3.2%
		YTD	17.9%
Exchange	London Stock Exchange	Price vs 52w high	-9.3%

Chart with moving averages and RSI indicator



Consensus forecasts

	3/31/2023			3/30/2024		
	Net Income	EPS	DPS	Net Income	EPS	DPS
Current	£3.0 b	\$0.11	\$0.09	£3.2 b	\$0.12	\$0.09
1 month change	-3.0%	-1.8%	3.4%	-3.8%	-4.8%	2.2%



U.S. Tech Leaders

Company	Alibaba (BABA)	BABA Performance	
Listed ETPs	3x Long Alibaba Daily ETP (3LAA)	1 week	4.2%
	3x Short Alibaba Daily ETP (3SAA)	1 month	1.1%
Exchange	Borsa Italiana	YTD	1.8%
		Price vs 52w high	-44.2%

Chart with moving averages and RSI indicator

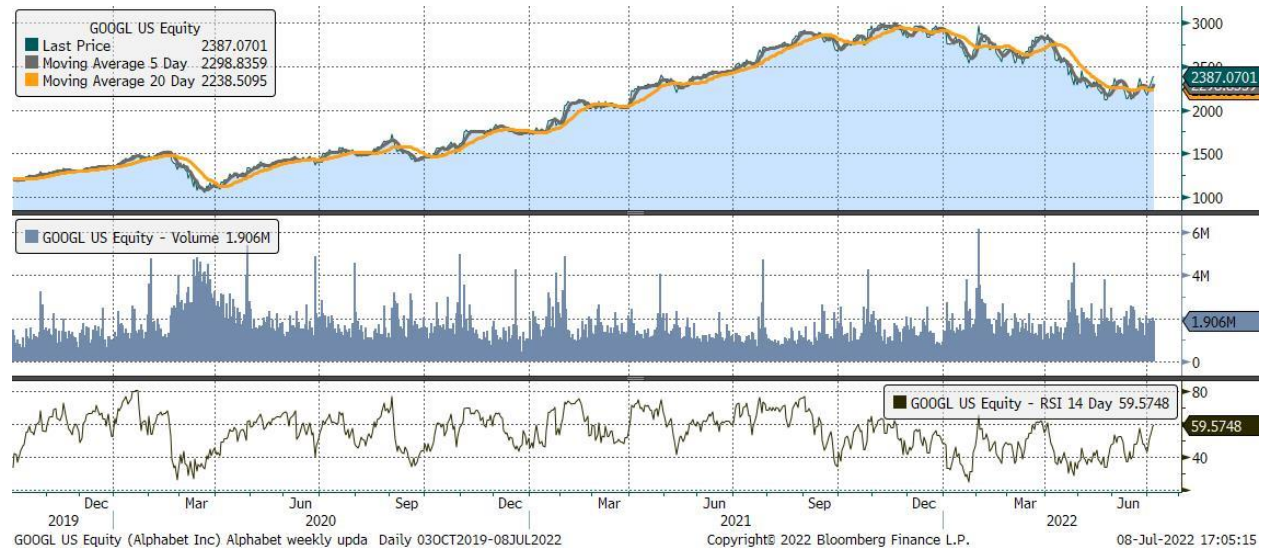


Consensus forecasts

	3/31/2023			3/30/2024		
	Net Income	EPS	CFPS	Net Income	EPS	CFPS
Current	\$131.9 b	\$49.98	\$55.48	\$158.5 b	\$57.98	\$46.72
1 month change	0.4%	1.9%	15.6%	0.8%	-0.8%	7.5%

Company	Alphabet (GOOGL)	GOOGL Performance	
Listed ETPs	3x Long Alphabet Daily ETP (3LAL) 3x Short Alphabet Daily ETP (3SAL)	1 week	9.8%
Exchanges	London Stock Exchange, Euronext Paris Borsa Italiana	1 month	1.8%
		YTD	-17.6%
		Price vs 52w high	-21.2%

Chart with moving averages and RSI indicator



Consensus forecasts

	12/31/2022			12/31/2023		
	Net Income	EPS	CFPS	Net Income	EPS	CFPS
Current	\$82.7 b	\$124.93	\$117.88	\$96.9 b	\$148.52	\$148.39
1 month change	-0.5%	0.7%	-0.5%	-0.8%	1.3%	-1.5%

Company	Amazon.com (AMZN)	AMZN Performance	
Listed ETPs	3x Long Amazon Daily ETP (3LZN) 3x Short Amazon Daily ETP (3SZN)	1 week	5.5%
Exchanges	London Stock Exchange, Euronext Paris Borsa Italiana	1 month	-4.7%
		YTD	-30.7%
		Price vs 52w high	-38.7%

Chart with moving averages and RSI indicator



Consensus forecasts

	12/31/2022			12/31/2023		
	Net Income	EPS	CFPS	Net Income	EPS	CFPS
Current	\$20.7 b	\$1.85	\$5.80	\$40.8 b	\$3.58	\$7.29
1 month change	-10.4%	-6.4%	0.0%	-3.0%	-3.1%	0.0%

Company	AMD (AMD)	AMD Performance	
Listed ETPs	3x Long ADM Daily ETP (3LAM)	1 week	7.7%
	3x Short ADM Daily ETP (3SAM)	1 month	-22.1%
Exchange	Euronext Paris, Borsa Italiana	YTD	-44.9%
		Price vs 52w high	-51.7%

Chart with moving averages and RSI indicator



Consensus forecasts

	12/25/2022			12/25/2023		
	Net Income	EPS	CFPS	Net Income	EPS	CFPS
Current	\$6.7 b	\$4.36	\$3.77	\$7.8 b	\$4.90	\$4.73
1 month change	0.4%	0.4%	-0.4%	0.2%	-1.1%	-0.1%

Company	Apple (AAPL)	AAPL Performance	
Listed ETPs	3x Long Apple Daily ETP (3LAP)	1 week	5.8%
	3x Short Apple Daily ETP (3SAP)	1 month	-0.6%
Exchanges	London Stock Exchange, Euronext Paris	YTD	-17.0%
	Borsa Italiana	Price vs 52w high	-19.6%

Chart with moving averages and RSI indicator



Consensus forecasts

	9/25/2022			9/25/2023		
	Net Income	EPS	CFPS	Net Income	EPS	CFPS
Current	\$100.3 b	\$6.12	\$6.93	\$103.8 b	\$6.51	\$7.49
1 month change	0.0%	-0.1%	0.0%	-0.2%	-0.3%	0.0%

Company	Coinbase (COIN)	COIN Performance	
Listed ETPs	3x Long Coinbase Daily ETP (3LCO) 3x Short Coinbase Daily ETP (3SCO)	1 week	22.9%
Exchanges	Borsa Italiana	1 month	-12.9%
		YTD	-76.1%
		Price vs 52w high	-83.7%

Chart with moving averages and RSI indicator



Consensus forecasts

	12/31/2022			12/31/2023		
	Net Income	EPS	CFPS	Net Income	EPS	CFPS
Current	-\$1.6 b	-\$6.39	-\$15.60	-\$0.7 b	-\$2.80	\$15.48
1 month change	35.3%	45.8%	0.0%	32.4%	311.1%	0.0%

Company	Meta Platforms (META)	FB Performance	
Listed ETPs	3x Long Facebook Daily ETP (3LBP)	1 week	6.8%
	3x Short Facebook Daily ETP (3SBP)	1 month	-13.1%
Exchanges	London Stock Exchange, Euronext Paris	YTD	-49.2%
	Borsa Italiana	Price vs 52w high	-55.5%

Chart with moving averages and RSI indicator



Consensus forecasts

	12/31/2022			12/31/2023		
	Net Income	EPS	CFPS	Net Income	EPS	CFPS
Current	\$33.6 b	\$13.11	\$18.60	\$38.8 b	\$15.15	\$21.98
1 month change	-0.3%	-0.2%	-1.9%	-0.5%	0.6%	-2.4%

Company	Microsoft (MSFT)	MSFT Performance	
Listed ETPs	3x Long Microsoft Daily ETP (3LMS)	1 week	3.1%
	3x Short Microsoft Daily ETP (3SMS)	1 month	-1.0%
Exchanges	London Stock Exchange, Euronext Paris	YTD	-20.1%
	Borsa Italiana	Price vs 52w high	-23.4%

Chart with moving averages and RSI indicator



Consensus forecasts

	6/30/2022			6/30/2023		
	Net Income	EPS	CFPS	Net Income	EPS	CFPS
Current	\$72.0 b	\$9.50	\$12.15	\$80.0 b	\$10.70	\$14.32
1 month change	0.1%	0.1%	0.0%	-0.1%	-0.1%	0.0%

Company	MicroStrategy (MSTR)	MSTR Performance	
Listed ETPs	3x Long MicroStrategy Daily ETP (3LMI)	1 week	32.7%
	3x Short MicroStrategy Daily ETP (3SMI)	1 month	-5.0%
Exchanges	Borsa Italiana	YTD	-59.4%
		Price vs 52w high	-75.1%

Chart with moving averages and RSI indicator



Consensus forecasts

	12/31/2022			12/31/2023		
	Net Income	EPS	CFPS	Net Income	EPS	CFPS
Current	-\$0.1 b	-\$10.38	-	\$0.0 b	\$1.56	-
1 month change	-7.3%	0.0%	-	37.8%	0.0%	-

Company	Moderna (MRNA)	MRNA Performance	
Listed ETPs	3x Long Moderna Daily ETP (3LMO)	1 week	17.5%
	3x Short Moderna Daily ETP (3SMO)	1 month	18.6%
Exchange	Euronext Paris, Borsa Italiana	YTD	-30.6%
		Price vs 52w high	-64.5%

Chart with moving averages and RSI indicator



Consensus forecasts

	12/31/2022			12/31/2023		
	Net Income	EPS	CFPS	Net Income	EPS	CFPS
Current	\$11.5 b	\$27.47	\$29.13	\$3.6 b	\$7.80	\$11.85
1 month change	0.0%	0.0%	0.1%	0.0%	0.0%	0.3%

Company	Netflix (NFLX)	NFLX Performance	
Listed ETPs	3x Long Netflix Daily ETP (3LNF) 3x Short Netflix Daily ETP (3SNF)	1 week	3.9%
Exchange	London Stock Exchange, Euronext Paris Borsa Italiana	1 month	-7.8%
		YTD	-69.0%
		Price vs 52w high	-73.3%

Chart with moving averages and RSI indicator



Consensus forecasts

	12/31/2022			12/31/2023		
	Net Income	EPS	CFPS	Net Income	EPS	CFPS
Current	\$5.1 b	\$11.09	\$5.78	\$5.4 b	\$12.03	\$5.94
1 month change	-0.8%	-0.6%	0.0%	-1.8%	-3.4%	0.0%

Company	NIO Inc (NIO)	NIO Performance	
Listed ETPs	3x Long NIO Daily ETP (3LNI)	1 week	5.8%
	3x Short NIO Daily ETP (3SNI)	1 month	10.9%
Exchange	London Stock Exchange, Euronext Paris	YTD	-28.7%
	Borsa Italiana	Price vs 52w high	-52.3%

Chart with moving averages and RSI indicator



Consensus forecasts

	12/31/2022			12/31/2023		
	Net Income	EPS	CFPS	Net Income	EPS	CFPS
Current	-\$6.5 b	-\$3.91	\$0.50	-\$2.1 b	-\$1.37	\$3.46
1 month change	4.8%	5.1%	-18.6%	23.9%	14.8%	-21.6%

Company	NVIDIA (NVDA)	NVDA Performance	
Listed ETPs	3x Long NVIDIA Daily ETP (3LNV)	1 week	9.1%
	3x Short NVIDIA Daily ETP (3SNV)	1 month	-15.1%
Exchange	London Stock Exchange, Euronext Paris	YTD	-46.1%
	Borsa Italiana	Price vs 52w high	-54.2%

Chart with moving averages and RSI indicator



Consensus forecasts

	1/30/2023			1/30/2024		
	Net Income	EPS	CFPS	Net Income	EPS	CFPS
Current	\$13.6 b	\$5.40	\$5.50	\$15.8 b	\$6.37	\$7.72
1 month change	-1.1%	-1.6%	-0.2%	-2.6%	-2.8%	-2.2%

Company	Palantir (PLTR)	PLTR Performance	
Listed ETPs	3x Long Palantir Daily ETP (3LPA)	1 week	9.7%
	3x Short Palantir Daily ETP (3SPA)	1 month	10.8%
Exchange	Euronext Paris, Borsa Italiana	YTD	-44.2%
		Price vs 52w high	-65.3%

Chart with moving averages and RSI indicator



Consensus forecasts

	12/31/2022			12/31/2023		
	Net Income	EPS	CFPS	Net Income	EPS	CFPS
Current	\$0.4 b	\$0.16	\$0.18	\$0.6 b	\$0.22	\$0.29
1 month change	-0.4%	-1.9%	-7.7%	-0.1%	-0.9%	-11.7%

Company	PayPal (PYPL)	PYPL Performance	
Listed ETPs	3x Long PayPal Daily ETP (3LPP)	1 week	2.9%
	3x Short PayPal Daily ETP (3SPP)	1 month	-16.0%
Exchange	Borsa Italiana	YTD	-61.1%
		Price vs 52w high	-76.3%

Chart with moving averages and RSI indicator



Consensus forecasts

	12/31/2022			12/31/2023		
	Net Income	EPS	CFPS	Net Income	EPS	CFPS
Current	\$4.5 b	\$3.85	\$5.22	\$5.5 b	\$4.75	\$6.33
1 month change	-0.6%	-0.5%	-4.2%	-1.1%	-0.6%	-5.9%

Company	Spotify (SPOT)	SPOT Performance	
Listed ETPs	3x Long Spotify Daily ETP (3LPO)	1 week	6.9%
	3x Short Spotify Daily ETP (3SPO)	1 month	-10.2%
Exchange	Borsa Italiana	YTD	-55.5%
		Price vs 52w high	-65.9%

Chart with moving averages and RSI indicator



Consensus forecasts

	12/31/2022			12/31/2023		
	Net Income	EPS	CFPS	Net Income	EPS	CFPS
Current	-\$0.1 b	-\$0.56	\$0.86	\$0.1 b	\$0.44	\$2.13
1 month change	-1.3%	-2.6%	-12.4%	-3.0%	2.6%	1.0%

Company	Square (SQ)	SQ Performance	
Listed ETPs	3x Long Square Daily ETP (3LSQ)	1 week	4.9%
	3x Short Square Daily ETP (3SSQ)	1 month	-20.9%
Exchange	Borsa Italiana	YTD	-58.5%
		Price vs 52w high	-76.8%

Chart with moving averages and RSI indicator



Consensus forecasts

	12/31/2022			12/31/2023		
	Net Income	EPS	CFPS	Net Income	EPS	CFPS
Current	\$0.5 b	\$0.81	\$1.94	\$0.9 b	\$1.56	\$2.66
1 month change	-9.1%	-12.9%	0.0%	-5.3%	-5.1%	0.0%

Company	Tesla (TSLA)	TSLA Performance	
Listed ETPs	3x Long Tesla Daily ETP (3LTS) 3x Short Tesla Daily ETP (3STS)	1 week	10.3%
Exchange	London Stock Exchange, Euronext Paris Borsa Italiana	1 month	3.7%
		YTD	-28.8%
		Price vs 52w high	-39.5%

Chart with moving averages and RSI indicator



Consensus forecasts

	12/31/2022			12/31/2023		
	Net Income	EPS	CFPS	Net Income	EPS	CFPS
Current	\$13.2 b	\$11.59	\$14.76	\$18.5 b	\$15.96	\$18.94
1 month change	-2.7%	0.3%	0.0%	0.9%	0.3%	0.0%

Company	Uber Technologies (UBER)	UBER Performance	
Listed ETPs	3x Long Uber Daily ETP (3LUB)	1 week	4.7%
	3x Short Uber Daily ETP (3SUB)	1 month	-13.5%
Exchange	London Stock Exchange, Euronext Paris	YTD	-46.7%
	Borsa Italiana	Price vs 52w high	-54.6%

Chart with moving averages and RSI indicator



Consensus forecasts

	12/31/2022			12/31/2023		
	Net Income	EPS	CFPS	Net Income	EPS	CFPS
Current	-\$4.6 b	-\$2.12	\$0.64	\$0.8 b	\$0.35	\$1.43
1 month change	0.0%	0.9%	0.0%	0.0%	-1.1%	0.0%

Company	Zoom (ZM)	ZM Performance	
Listed ETPs	2x Long Zoom Daily ETP (2LZM)	1 week	8.0%
	2x Short Zoom Daily ETP (2SZM)	1 month	3.7%
Exchange	Borsa Italiana	YTD	-34.9%
		Price vs 52w high	-70.4%

Chart with moving averages and RSI indicator



Consensus forecasts

	1/31/2023			1/31/2024		
	Net Income	EPS	CFPS	Net Income	EPS	CFPS
Current	\$1.2 b	\$3.77	\$5.64	\$1.3 b	\$4.04	\$5.67
1 month change	0.0%	0.0%	0.0%	0.0%	0.0%	0.0%



E.U Stocks

Company	Airbus (AIR)	AIR Performance	
Listed ETPs	3x Long Airbus Daily ETP (3LAR)	1 week	0.8%
	3x Short Airbus Daily ETP (3SAR)	1 month	-11.3%
		YTD	-13.5%
Exchange	Euronext Paris	Price vs 52w high	-20.7%

Chart with moving averages and RSI indicator

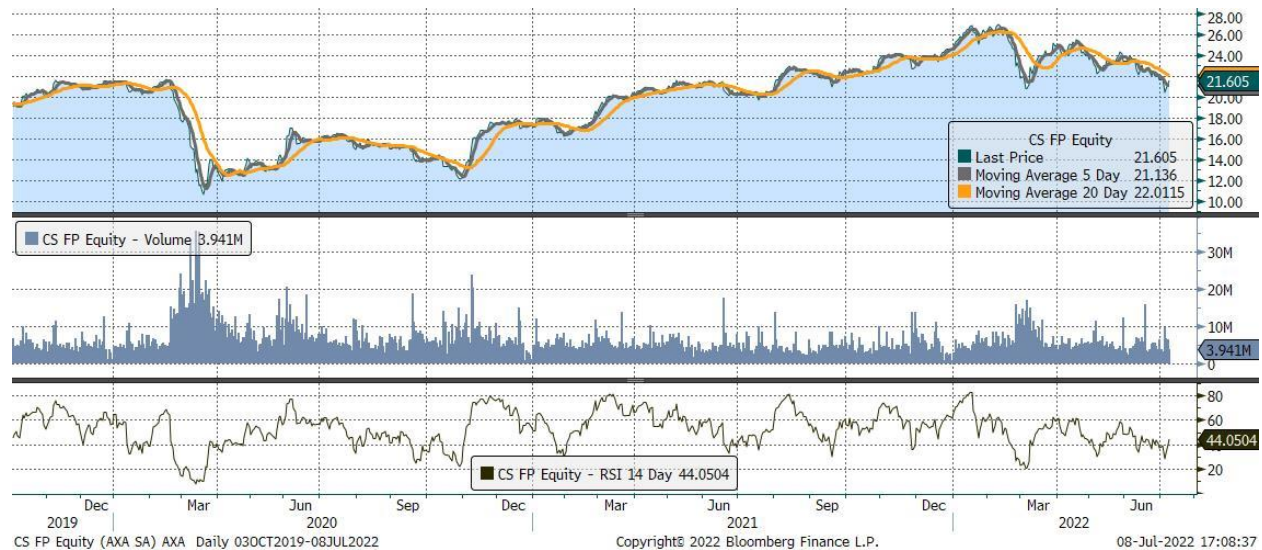


Consensus forecasts

	12/31/2022			12/31/2023		
	Net Income	EPS	DPS	Net Income	EPS	DPS
Current	€4.1 b	€5.08	€1.78	€5.4 b	€6.84	€2.35
1 month change	-0.2%	-0.2%	0.6%	0.2%	0.2%	-0.1%

Company	AXA (CS)	CS Performance	
Listed ETPs	3x Long AXA Daily ETP (3LAX)	1 week	-0.6%
	3x Short AXA Daily ETP (3SAX)	1 month	-7.4%
		YTD	-12.3%
Exchange	Euronext Paris	Price vs 52w high	-25.7%

Chart with moving averages and RSI indicator

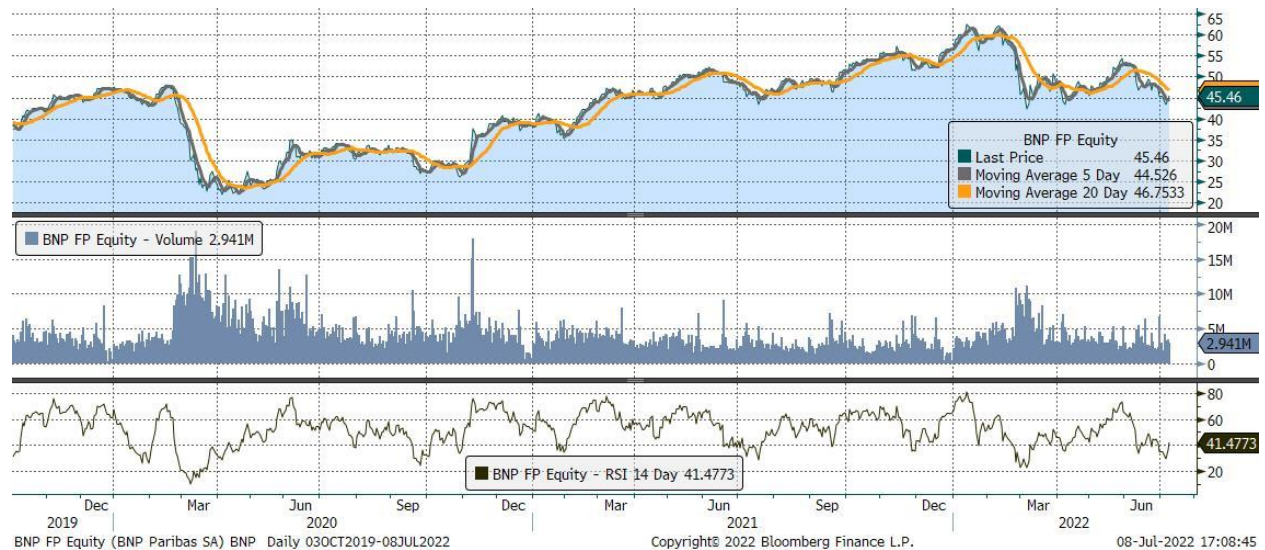


Consensus forecasts

	12/31/2022			12/31/2023		
	Net Income	EPS	DPS	Net Income	EPS	DPS
Current	€7.1 b	€2.97	€1.64	€7.5 b	€3.20	€1.75
1 month change	-0.9%	-0.6%	-1.0%	-0.8%	-0.7%	0.1%

Company	BNP Paribas (BNP)	BNP Performance	
Listed ETPs	3x Long BNP Daily ETP (3LBN)	1 week	0.3%
	3x Short BNP Daily ETP (3SBN)	1 month	-12.7%
Exchange	Euronext Paris	YTD	-19.6%
		Price vs 52w high	-33.2%

Chart with moving averages and RSI indicator



Consensus forecasts

	12/31/2022			12/31/2023		
	Net Income	EPS	DPS	Net Income	EPS	DPS
Current	€9.8 b	€8.26	€3.99	€8.7 b	€7.30	€3.80
1 month change	4.3%	1.1%	0.8%	0.1%	-3.7%	0.9%

Company	Danone (BN)	BN Performance	
Listed ETPs	3x Long Danone Daily ETP (3LDA)	1 week	0.5%
	3x Short Danone Daily ETP (3SDA)	1 month	-0.7%
		YTD	1.1%
Exchange	Euronext Paris	Price vs 52w high	-17.9%

Chart with moving averages and RSI indicator

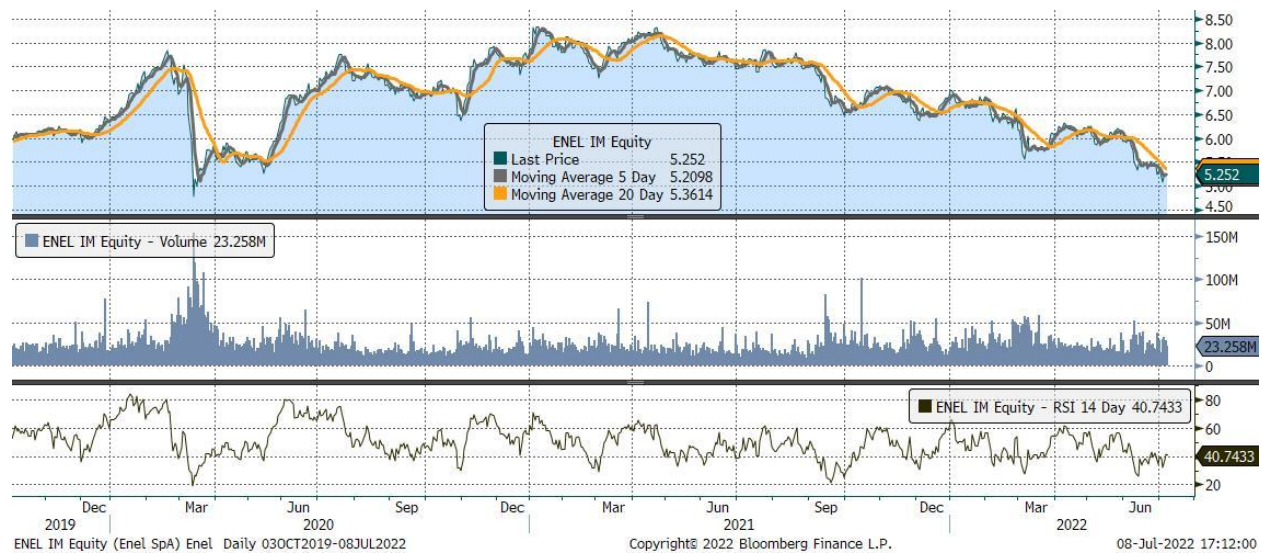


Consensus forecasts

	12/31/2022			12/31/2023		
	Net Income	EPS	DPS	Net Income	EPS	DPS
Current	€2.1 b	€3.22	€1.98	€2.2 b	€3.49	€2.08
1 month change	0.2%	0.4%	0.5%	0.0%	0.3%	-0.1%

Company	Enel (ENEL)	ENEL Performance	
Listed ETPs	3x Long Enel Daily ETP (3LNL)	1 week	-1.1%
	3x Short Enel Daily ETP (3SNL)	1 month	-10.2%
Exchange	Borsa Italiana	YTD	-23.4%
		Price vs 52w high	-35.1%

Chart with moving averages and RSI indicator

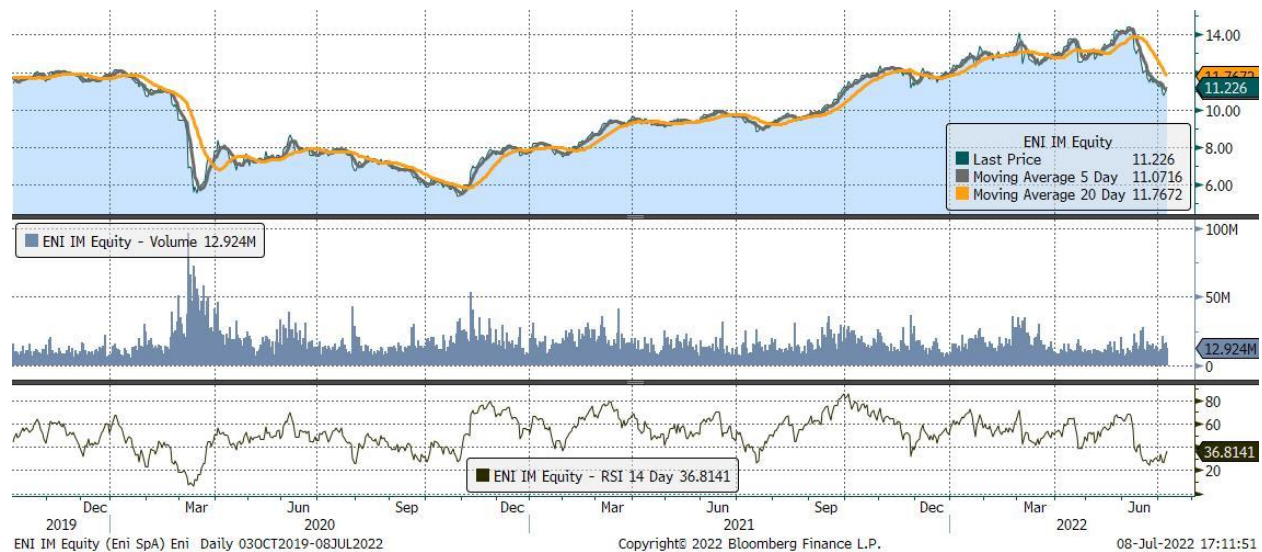


Consensus forecasts

	12/31/2022			12/31/2023		
	Net Income	EPS	DPS	Net Income	EPS	DPS
Current	€5.7 b	€0.56	€0.40	€6.2 b	€0.61	€0.43
1 month change	0.9%	1.3%	-0.2%	0.4%	0.5%	0.0%

Company	Eni (ENI)	ENI Performance	
Listed ETPs	3x Long Eni Daily ETP (3LEN)	1 week	0.0%
	3x Short Eni Daily ETP (3SEN)	1 month	-22.0%
Exchange	Borsa Italiana	YTD	-5.2%
		Price vs 52w high	-24.4%

Chart with moving averages and RSI indicator

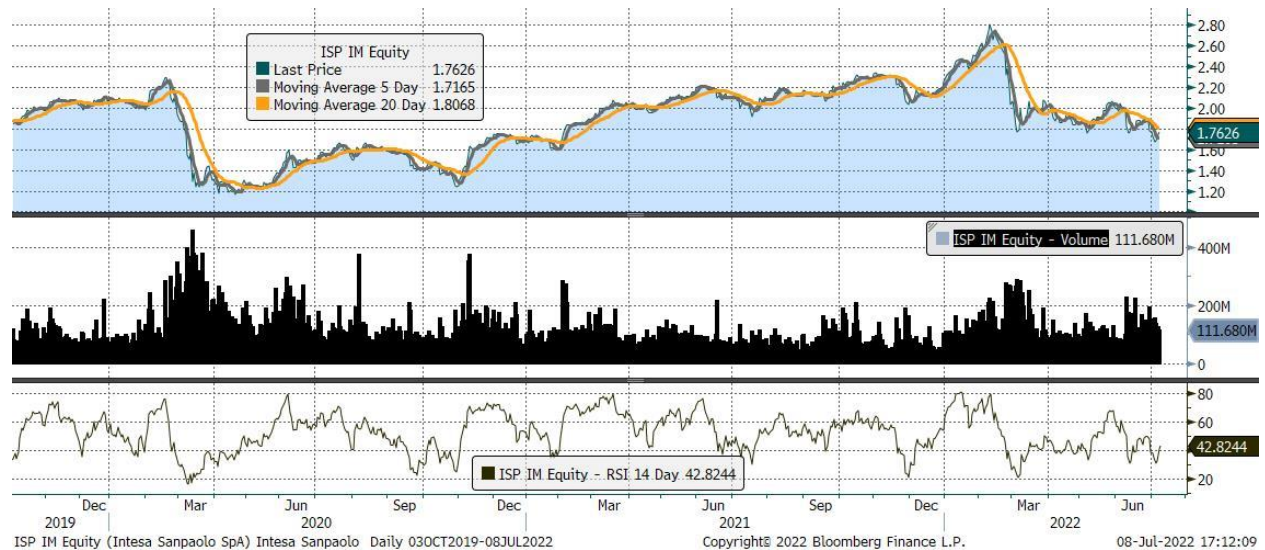


Consensus forecasts

	12/31/2022			12/31/2023		
	Net Income	EPS	DPS	Net Income	EPS	DPS
Current	€11.0 b	€3.14	€0.88	€8.3 b	€2.43	€0.87
1 month change	5.7%	5.5%	0.6%	8.0%	7.6%	0.1%

Company	Intesa Sanpaolo (ISP)	ISP Performance	
Listed ETPs	3x Long Intesa Sanpaolo Daily ETP (3LSP)	1 week	-0.3%
	3x Short Intesa Sanpaolo Daily ETP (3SSP)	1 month	-11.4%
		YTD	-19.3%
Exchange	Borsa Italiana	Price vs 52w high	-39.6%

Chart with moving averages and RSI indicator



Consensus forecasts

	12/31/2022			12/31/2023		
	Net Income	EPS	DPS	Net Income	EPS	DPS
Current	€4.0 b	€0.21	€0.15	€5.0 b	€0.28	€0.20
1 month change	0.0%	0.5%	-0.7%	-0.6%	1.8%	0.5%

Company	L'Oreal (OR)	OR Performance	
Listed ETPs	3x Long L'Oreal Daily ETP (3LOR)	1 week	0.3%
	3x Short L'Oreal Daily ETP (3SOR)	1 month	1.1%
Exchange	Euronext Paris	YTD	-20.2%
		Price vs 52w high	-23.8%

Chart with moving averages and RSI indicator

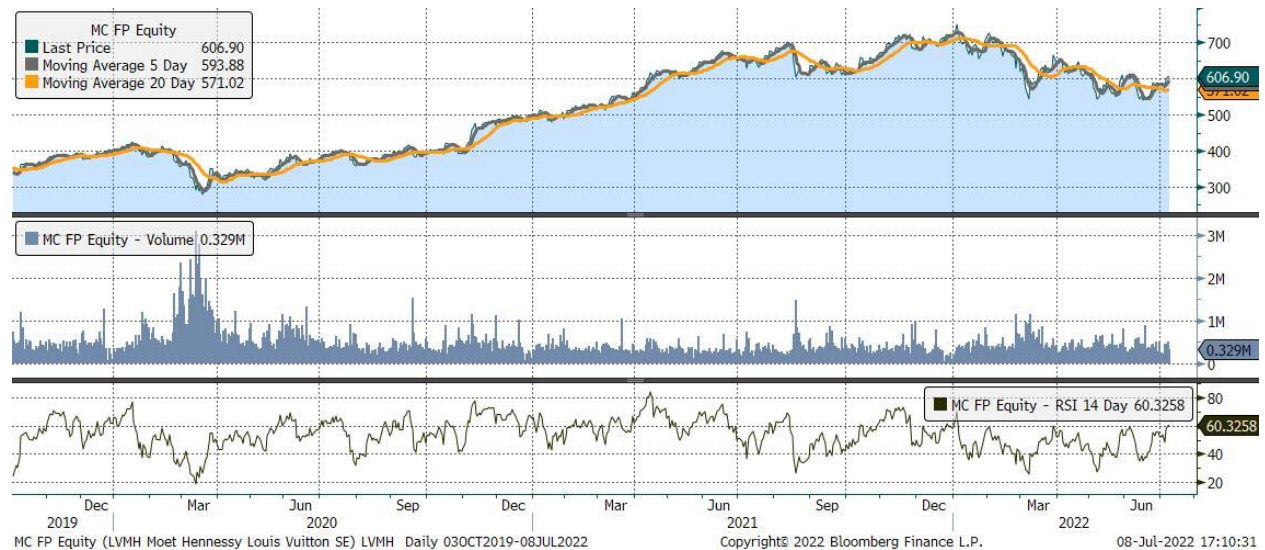


Consensus forecasts

	12/31/2022			12/31/2023		
	Net Income	EPS	DPS	Net Income	EPS	DPS
Current	€5.6 b	€10.32	€5.45	€6.0 b	€11.15	€5.94
1 month change	0.1%	-0.2%	0.3%	-0.1%	-0.5%	0.1%

Company	LVMH (MC)	MC Performance	
Listed ETPs	3x Long LVMH Daily ETP (3LLV)	1 week	4.6%
	3x Short LVMH Daily ETP (3SLV)	1 month	0.9%
Exchange	Euronext Paris	YTD	-15.9%
		Price vs 52w high	-20.0%

Chart with moving averages and RSI indicator



Consensus forecasts

	12/31/2022			12/31/2023		
	Net Income	EPS	DPS	Net Income	EPS	DPS
Current	€13.7 b	€26.82	€11.27	€15.2 b	€29.87	€12.63
1 month change	0.8%	-0.4%	0.5%	1.3%	-0.1%	0.6%

Company	Safran (SAF)	SAF Performance	
Listed ETPs	3x Long Safran Daily ETP (3LSA)	1 week	4.5%
	3x Short Safran Daily ETP (3SSA)	1 month	1.4%
Exchange	Euronext Paris	YTD	-6.7%
		Price vs 52w high	-19.2%

Chart with moving averages and RSI indicator



Consensus forecasts

	12/31/2022			12/31/2023		
	Net Income	EPS	DPS	Net Income	EPS	DPS
Current	€1.6 b	€3.69	€1.51	€2.1 b	€4.89	€2.02
1 month change	-1.7%	-0.9%	1.5%	-1.6%	-0.9%	0.7%

Company	Sanofi (SAN)	SAN Performance	
Listed ETPs	3x Long Sanofi Daily ETP (3LSN)	1 week	1.9%
	3x Short Sanofi Daily ETP (3SSN)	1 month	0.2%
		YTD	15.9%
Exchange	Euronext Paris	Price vs 52w high	-6.4%

Chart with moving averages and RSI indicator



Consensus forecasts

	12/31/2022			12/31/2023		
	Net Income	EPS	DPS	Net Income	EPS	DPS
Current	€9.7 b	€7.71	€3.52	€9.9 b	€7.99	€3.66
1 month change	-0.1%	0.1%	0.0%	-0.6%	-0.5%	0.1%

Company	Schneider Electric (SU)	SU Performance	
Listed ETPs	3x Long Schneider Electric Daily ETP (3LSE)	1 week	5.4%
	3x Short Schneider Electric Daily ETP (3SSE)	1 month	-8.2%
		YTD	-30.6%
Exchange	Euronext Paris	Price vs 52w high	-34.4%

Chart with moving averages and RSI indicator

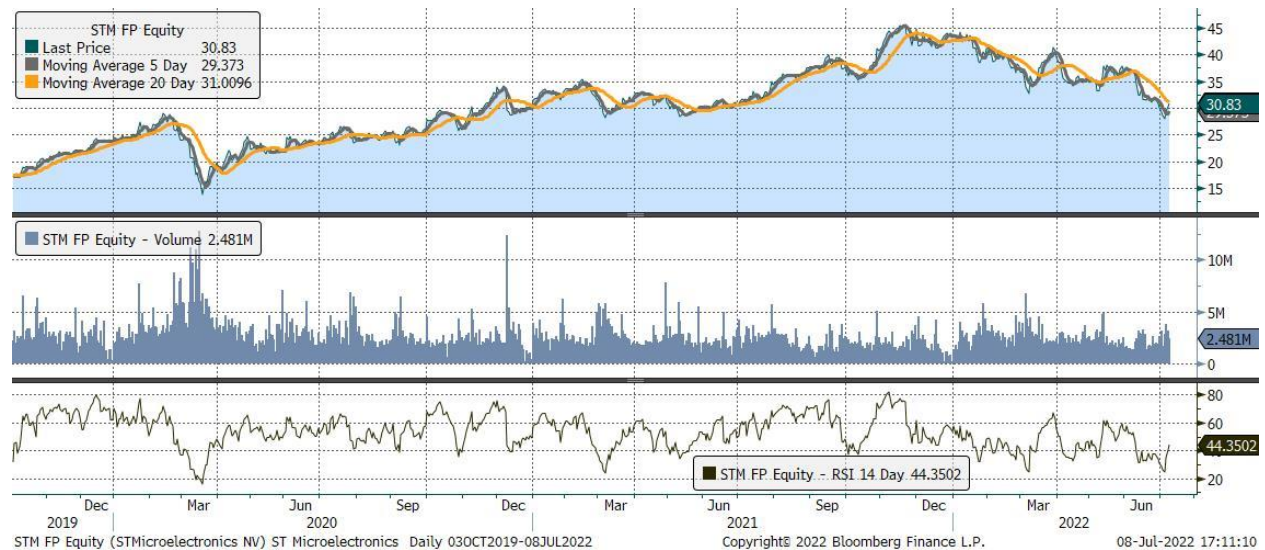


Consensus forecasts

	12/31/2022			12/31/2023		
	Net Income	EPS	DPS	Net Income	EPS	DPS
Current	€3.9 b	€6.93	€3.07	€4.3 b	€7.59	€3.33
1 month change	0.0%	0.4%	-1.1%	-1.4%	-1.2%	-0.8%

Company	STMicroelectronics (STM)	STM Performance	
Listed ETPs	3x Long STMicroelectronics Daily ETP (3LST)	1 week	5.9%
	3x Short STMicroelectronics Daily ETP (3SST)	1 month	-16.6%
		YTD	-29.3%
Exchange	Euronext Paris	Price vs 52w high	-33.5%

Chart with moving averages and RSI indicator



Consensus forecasts

	12/31/2022			12/31/2023		
	Net Income	EPS	DPS	Net Income	EPS	DPS
Current	€3.1 b	€3.31	€0.25	€3.1 b	€3.40	€0.27
1 month change	-0.6%	0.2%	-5.6%	-0.1%	0.4%	-3.2%

Company	TotalEnergies (TTE)	TTE Performance	
Listed ETPs	3x Long TotalEnergies Daily ETP (3LTE)	1 week	-1.8%
	3x Short TotalEnergies Daily ETP (3STE)	1 month	-11.7%
		YTD	14.5%
Exchange	Euronext Paris	Price vs 52w high	-14.2%

Chart with moving averages and RSI indicator

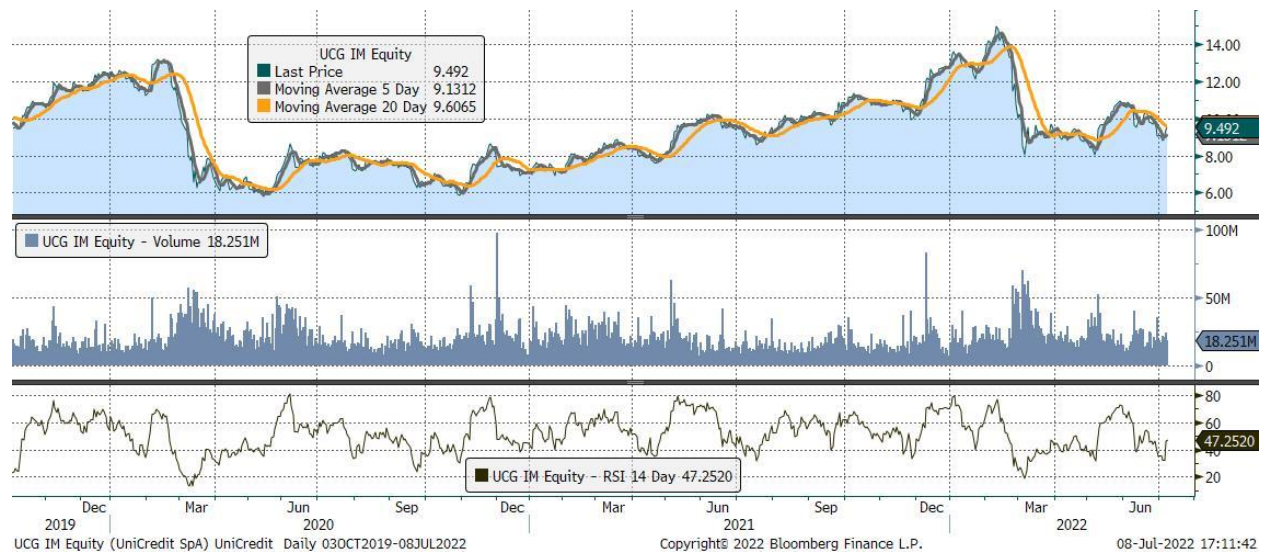


Consensus forecasts

	12/31/2022			12/31/2023		
	Net Income	EPS	DPS	Net Income	EPS	DPS
Current	€32.5 b	€12.70	€2.90	€26.0 b	€10.39	€3.04
1 month change	5.1%	4.1%	-0.3%	8.1%	3.7%	-0.4%

Company	UniCredit (UCG)	UCG Performance	
Listed ETPs	3x Long UniCredit Daily ETP (3LTE)	1 week	4.5%
	3x Short UniCredit Daily ETP (3STE)	1 month	-10.4%
		YTD	-25.8%
Exchange	Borsa Italiana	Price vs 52w high	-40.4%

Chart with moving averages and RSI indicator



Consensus forecasts

	12/31/2022			12/31/2023		
	Net Income	EPS	DPS	Net Income	EPS	DPS
Current	€2.8 b	€1.28	€0.51	€3.5 b	€1.87	€0.69
1 month change	4.1%	0.0%	-5.5%	3.5%	3.0%	1.3%

Company	Volkswagen (VOW3)	VOW3 Performance	
Listed ETPs	3x Long Volkswagen Daily ETP (3LVW)	1 week	5.5%
	3x Short Volkswagen Daily ETP (3SVW)	1 month	-15.9%
		YTD	-20.1%
Exchange	Euronext Paris	Price vs 52w high	-39.0%

Chart with moving averages and RSI indicator



Consensus forecasts

	12/31/2022			12/31/2023		
	Net Income	EPS	DPS	Net Income	EPS	DPS
Current	€16.8 b	€33.03	€8.51	€17.1 b	€34.97	€9.01
1 month change	-0.1%	-1.0%	0.4%	-0.9%	-0.1%	-2.9%

Feedback and comments: please send to graniteshares@europe.com

General Notice

For professional clients and eligible counterparties only.

GraniteShares Limited ("**GraniteShares**") is an appointed representative of Kroll Securities Ltd. (FRN: 466588) which is authorised and regulated by the Financial Conduct Authority.

This document does not constitute an offer to buy or sell or a solicitation of an offer to buy securities in any company. This document is not intended for distribution to any other country where such distribution or use would be contrary to local law or regulation. Specifically, this document is not intended for general distribution in the United States or Canada.

Investing in financial markets involves a substantial degree of risk. Nothing described herein is intended to imply that an investment is "safe", "conservative", "risk free" or "risk averse". This document does not consider the specific investment objective, financial situation or particular needs of any potential investor and is intended only for those investors who are capable of understanding the risk of loss of all or a substantial part of their monies. Potential investors in the UK are reminded that they will not benefit from the UK investors compensation scheme.

Nothing contained herein constitutes investment, legal, tax or other advice nor is to be relied upon in making an investment or other decision. No recommendation is made positive or otherwise, regarding individual securities or investments mentioned herein. Any summary list of risk factors does not purport to be a complete enumeration or explanation of the risks involved in an investment in short and leveraged products. Prospective clients must consult with their own legal, tax and financial advisers before deciding to invest.

This document contains the opinions of the author and such opinions are subject to change without notice. The source of data is GraniteShares unless otherwise stated. No guarantee is made to the accuracy of the information provided which has been obtained from sources believed to be reliable. This document and the information contained herein is intended only for the use of persons (or entities they represent) to whom it has been provided.

Risk Factors

An investment in a GraniteShares short and leveraged exchange traded product ("**ETP**") may not be suitable for all investors. They are intended for investors who wish to take a very short term view on the underlying asset and are not intended as buy and hold investments.

Performance and capital loss: Past performance is not a reliable indicator of future results. The value of an investment may go down as well as up and can result in losses, up to and including a total loss of the amount initially invested.

Generic risks: Investments in ETPs involve numerous risks including, among others, company risks, general market risks, credit risks, foreign exchange risks, interest rate risks, geopolitical risks and liquidity risks.

Specific product risks: The Index is constructed to track the performance of an increased (leveraged) and/or short exposure to the underlying asset. A fall (or rise where short and leveraged exposure) in value of the underlying asset can result in a greater reduction in the level of the Index. The Index is designed to do this on a daily basis only which should not be equated with seeking a leveraged position for periods longer than a day. The ETP's performance over periods longer than one day will not be correlated or symmetrical with the returns of the underlying asset. Potential investors should refer to the section entitled "Risk Factors" and "Economic Overview of the ETP Securities" in the Prospectus relating to the GraniteShares ETPs for further details of these and other risks associated with an investment in short and leveraged ETPs and consult their financial advisers as needed.

Counterparty risk: An investment in a GraniteShares short and leveraged ETP involves counterparty risk. GraniteShares Financial plc has entered into a Swap Agreement with a counterparty, Natixis, that is backed with collateral. Failure of the counterparty to make payments may result in an investment in an ETP suffering a loss.

Index Disclaimer

The Index is created, calculated and published by Solactive AG. No financial instrument is sponsored, promoted, sold or supported in any other manner by Solactive AG nor does Solactive AG offer any express or implicit guarantee or assurance either with regard to the results of using the Index and/or Index trademark or the Index level at any time or in any other respect.