

The Long and Short of it – Weekly Update

Week in review:

An up week for all 3 major stock market indexes, rising every day but Wednesday (FOMC announcement day) and despite hawkish Fed Chair Powell comments and lingering banking system concerns. The week opened with news of the UBS acquisition of Credit Suisse helping to slightly alleviate banking system concerns and moving stock markets higher. Focused concerns still remained, however, with First Republic Bank share prices falling nearly 50% (on Monday). All 3 major stock market indexes powered higher Tuesday on the back of diminished banking system concerns and expectations of a “supportive” Fed decision Wednesday. Treasury rates, steeply lower on the back of flight-to-quality investing, reflecting this same sentiment rose sharply Tuesday with the 2-year Treasury rate, for example, climbing 25 bps higher. An as-expected 25bp rate hike accompanied by less-than-accommodative comments from Chairman Powell reversed Tuesday’s sentiment, sending stock indexes sharply lower and Treasury rates, once again, sharply lower. While Chairman Powell stated he expected one more 25bp rate increase this year, he also insisted he did not expect the Fed to ease in 2023 despite very possible restrictive credit conditions arising from the current health of the banking system. Risk-on sentiment returned Thursday, though, with markets more or less refuting Chairman Powell’s comments, believing the Fed would indeed ease in 2023, bolstering stock prices and moving Treasury rates lower through the end of the week. Fresh banking system concerns Friday, sending Deutsch Bank shares pronouncedly lower, moved larger bank stock prices lower (though not regional bank stock prices), capping index level gains. For the week, the S&P 500 Index increased 1.4% to 3,970.99 the Nasdaq Composite Index rose 1.7% to 11,823.96, the Dow Jones Industrial Average increased 1.2% to 32,238.15, the 10-year U.S. Treasury rate fell 7bps to 3.37% and the U.S. dollar (as measured by the ICE U.S. Dollar index – DXY) weakened 0.6%.

European stock indexes also moved higher last week though slightly less so than U.S. indexes. Early to mid-week gains in oil and base and precious metal prices moved energy and mining stocks higher, lifting index levels higher as well. Positive sentiment regarding banking stocks, also early in the week, did likewise with both the STOXX 600 and FTSE 100 Indexes up over 2% through Tuesday. The FOMC rate decision Wednesday, announced after European market hours, seemingly had little effect on European markets though the BoE’s announcement Thursday (25bp rate increase) along with lingering banking system concerns may have pressured stock prices lower. Revived banking system concerns, this time centred on Deutsche Bank, pushed bank stock prices markedly lower, moving both the STOXX 600 and FTSE 100 Indexes noticeably lower as well. Bund and Gilt rates mimicked U.S. rate moves, moving higher through Wednesday and then reversing to end almost unchanged at week’s end. For the week, the STOXX 600 Index increased 0.9% to 440.10, the FTSE 100 Index rose 1.0% to 7,405.45, the 10-year Gilt rate fell 3bps to 3.28%, the 10-year Bund rate increased 1bp to 2.12% and the British pound and euro strengthened 0.5% and 0.9%, respectively, both with respect to the U.S. dollar.

Week ahead:

EZ - M3 Money Supply; DE - Ifo Survey; UK - CBI Distributive Trades (Mon), FR - Business Climate Indicator; IT - Business and Consumer Confidence; US - Intl Trade in Goods, Consumer Confidence (Tue), DE - GfK Consumer Climate; US - Pending Home Sales (Wed), EZ - Economic Sentiment; IT - PPI; DE - CPI; US - Jobless Claims, GDP (Thu), US - PCE Price Index, Consumer Sentiment; EZ - HICP Flash, Unemployment Rate; DE - Retail Sales; FR - CPI, PPI, Consumer Mfg Goods Consumption; DE - Unemployment Rate; IT - CPI

Top performing ETPs over the week

	3x Long ETPs		3x Short ETPs	
UK	+3x BAE Systems (3LBA)	+23.2%	-3x Barclays (3SBC)	+9.9%
US	+3x NIO (3LNI)	+29.1%	-3x Square (3SSQ)	+56.7%
EU	+3x Sanofi (3LSN)	+25.1%	-3x Schneider Electric (3SSE)	+6.6%

Past performance is not a reliable indicator of future results. The value of an investment may go down as well as up and can result in losses, up to and including a total loss of the amount initially invested. All ETP performance figures are inclusive of fees and other adjustments. Returns measured in currency of underlying stock.

Weekly performance and moving averages – Underlying UK stocks

Underlying Stock	Closing Price 24 March 2023	Weekly change	MA 20d	MA 50d	High – 52w	Low – 52w	Price vs 52w High
AstraZeneca	11,080.00	2.5%	10,771.48	10,997.04	11,886.00	9,399.00	-6.8%
BAE Systems	973.00	7.4%	823.77	883.96	979.40	698.20	-0.7%
Barclays	133.90	-4.1%	161.52	172.12	193.16	128.16	-30.7%
BP	486.30	1.3%	462.58	519.33	570.50	359.20	-14.8%
Diageo	3,599.00	3.6%	3,669.40	3,563.26	4,067.00	3,363.00	-11.5%
Glencore	442.70	2.3%	490.18	511.83	584.50	378.34	-24.3%
Lloyds Banking Group	45.72	-1.2%	45.96	50.90	54.33	38.51	-15.9%
Rio Tinto	5,253.00	0.1%	5,314.89	5,941.34	6,406.00	4,424.50	-18.0%
Rolls-Royce	143.54	2.3%	94.39	125.18	160.00	64.48	-10.3%
Royal Dutch Shell A	2,200.50	-0.6%	2,306.77	2,440.61	2,613.50	1,908.60	-15.8%
Vodafone	88.58	-2.0%	104.82	95.27	132.30	83.25	-33.0%

3x Long ETP performance U.K. stocks

Underlying stock	Ticker	20-Mar	21-Mar	22-Mar	23-Mar	24-Mar	1 Week	Last 20 days
AstraZeneca	3LAZ	-0.8%	3.1%	1.9%	0.6%	2.2%	7.2%	6.5%
BAE Systems	3LBA	8.8%	4.5%	3.6%	5.3%	-0.7%	23.2%	17.9%
Barclays	3LBC	-6.9%	14.9%	-1.2%	-6.1%	-12.6%	-13.3%	-54.1%
BP	3LBP	4.2%	10.1%	0.7%	-3.4%	-7.6%	3.1%	-37.1%
Diageo	3LDO	3.8%	2.4%	4.6%	-3.4%	3.0%	10.6%	3.7%
Glencore	3LGL	11.5%	-0.6%	1.0%	0.9%	-5.9%	6.3%	-29.8%
Lloyds Banking Group	3LLL	-1.1%	13.4%	-2.4%	-5.8%	-7.3%	-4.5%	-33.2%
Rio Tinto	3LRI	6.2%	-1.2%	-1.2%	-1.8%	-2.0%	-0.2%	-26.3%
Rolls-Royce	3LRR	10.3%	0.0%	0.0%	0.0%	-4.5%	5.3%	-23.6%
Royal Dutch Shell A	3LRD	2.9%	9.9%	0.9%	-6.0%	-9.5%	-2.8%	-41.5%
Vodafone	3LVO	6.9%	0.6%	-4.3%	-1.9%	-7.3%	-6.5%	-29.0%

3x Short ETP performance U.K. stocks

Underlying stock	Ticker	20-Mar	21-Mar	22-Mar	23-Mar	24-Mar	1 Week	Last 20 days
AstraZeneca	3SAZ	0.9%	-3.4%	-1.8%	-0.7%	-2.1%	-7.0%	-6.8%
BAE Systems	3SBA	-8.6%	-4.5%	-4.1%	-4.9%	0.5%	-20.0%	-18.8%
Barclays	3SBC	6.5%	-14.9%	1.0%	6.1%	13.1%	9.9%	78.2%
BP	3SBP	-4.6%	-9.8%	0.0%	2.7%	7.6%	-4.9%	40.9%
Diageo	3SDO	-3.8%	-2.4%	-4.6%	3.4%	-3.0%	-10.2%	-5.4%
Glencore	3SGL	-11.5%	0.6%	-1.1%	-0.9%	5.9%	-7.6%	21.9%
Lloyds Banking Group	3SLL	0.9%	-13.3%	2.7%	5.6%	7.3%	1.8%	35.4%
Rio Tinto	3SRI	-6.2%	1.1%	1.2%	1.8%	2.0%	-0.3%	30.0%
Rolls-Royce	3SRR	-1.5%	-19.2%	1.6%	3.9%	7.7%	-9.5%	15.3%
Royal Dutch Shell A	3SRD	-3.3%	-9.3%	-0.9%	5.2%	9.8%	0.5%	52.2%
Vodafone	3SVO	-6.9%	-0.6%	4.2%	1.9%	7.3%	5.5%	36.1%

Data and charts

All performance data to 24 March 2023. Data and charts sourced from Bloomberg, unless otherwise indicated.

Weekly performance and moving averages – Underlying U.S. stocks

Underlying Stock	Closing Price 24 March 2023	Weekly change	MA 20d	MA 50d	High – 52w	Low – 52w	Price vs 52w High
Alibaba	86.90	6.4%	92.82	100.00	125.84	58.01	-30.9%
Alphabet	105.44	3.8%	101.58	96.12	143.75	83.34	-26.7%
Amazon	98.13	-0.8%	107.90	97.48	170.83	81.44	-42.6%
AMD	97.95	0.1%	77.79	81.49	125.66	54.58	-22.1%
Apple	160.25	3.4%	147.88	148.34	179.61	124.18	-10.8%
Coinbase	67.83	-9.5%	60.34	62.05	206.78	31.55	-67.2%
Facebook	206.01	5.3%	149.83	171.05	236.84	88.10	-13.0%
Microsoft	280.57	0.4%	252.56	255.16	315.94	213.46	-11.2%
MicroStrategy	256.67	-4.1%	228.16	250.81	522.27	132.62	-50.9%
Moderna	150.88	0.6%	158.21	164.96	217.20	115.06	-30.5%
Netflix	328.39	8.2%	267.48	333.00	396.47	162.81	-17.2%
NIO	9.07	9.8%	14.61	10.25	24.43	8.03	-62.9%
NVIDIA	267.79	4.1%	169.88	218.03	289.34	108.14	-7.4%
Palantir	8.20	4.1%	8.16	7.95	14.85	5.93	-44.8%
PayPal	73.85	1.2%	81.70	77.41	122.78	66.39	-39.9%
Spotify	128.30	1.0%	99.97	116.27	160.00	69.49	-19.8%

2x and 3x Long ETP performance U.S. stocks

Underlying stock	Ticker	20-Mar	21-Mar	22-Mar	23-Mar	24-Mar	1 Week
Alibaba	3LAA	-2.6%	10.0%	-0.2%	10.2%	1.3%	19.3%
Alphabet	3LAL	-1.3%	10.9%	-4.5%	6.4%	-0.5%	10.8%
Amazon	3LZN	-3.9%	8.9%	-5.7%	0.0%	-1.8%	-3.1%
AMD	3LAM	-3.3%	-2.8%	5.1%	8.3%	-7.0%	-0.4%
Apple	3LAP	4.5%	3.5%	-2.8%	2.1%	2.5%	10.1%
Coinbase	3LCO	0.5%	35.3%	-24.5%	-47.2%	6.9%	-42.1%
Meta Platform	3LFB	3.3%	6.6%	-3.5%	6.7%	2.5%	16.1%
Microsoft	3LMS	-7.8%	1.7%	-1.7%	5.9%	3.1%	0.6%
MicroStrategy	3LMI	-4.3%	10.7%	-29.2%	20.0%	-7.6%	-16.9%
Moderna	3LMO	8.9%	-4.7%	-7.8%	2.5%	2.9%	0.8%
Netflix	3LNF	1.5%	0.6%	-11.7%	27.0%	7.5%	23.1%
NIO	3LNI	17.7%	17.8%	-5.9%	5.9%	-6.5%	29.1%
NVIDIA	3LNV	1.9%	3.4%	3.0%	8.2%	-4.6%	12.1%
Palantir	3LPA	7.5%	13.7%	-8.6%	4.3%	-4.7%	11.1%
PayPal	3LPP	0.8%	14.3%	-9.3%	-7.2%	5.4%	2.2%
Spotify	3LPA	7.5%	13.7%	-8.6%	4.3%	-4.7%	11.1%
Square	3LSQ	2.0%	11.9%	-18.7%	-56.1%	-5.9%	-61.6%
Tesla	3LTS	5.1%	23.4%	-9.8%	1.6%	-2.9%	15.4%
UBER	3LUB	1.3%	8.7%	-12.3%	-3.3%	-4.2%	-10.5%
Zoom	2LZM	0.3%	7.3%	-8.6%	1.3%	-0.5%	-0.9%

3x Short ETP performance U.S. Stocks

Underlying stock	Ticker	20-Mar	21-Mar	22-Mar	23-Mar	24-Mar	1 Week
Alibaba	3SAA	2.5%	-10.0%	0.2%	-10.3%	-1.3%	-18.1%
Alphabet	3SAL	1.3%	-10.9%	4.5%	-6.4%	0.5%	-11.3%
Amazon	3SZN	3.9%	-8.9%	5.7%	0.0%	1.8%	1.9%
AMD	3SAM	3.3%	2.8%	-5.1%	-8.3%	7.0%	-1.2%
Apple	3SAP	-4.5%	-3.5%	2.8%	-2.1%	-2.4%	-9.6%
Meta Platform	3SFB	-3.3%	-6.6%	3.5%	-6.7%	-2.5%	-14.8%
Microsoft	3SMS	7.9%	-1.7%	1.7%	-5.9%	-3.1%	-1.6%
MicroStrategy	3SMI	3.4%	-11.0%	28.8%	-20.3%	7.3%	1.4%
Moderna	3SMO	-8.9%	4.7%	7.8%	-2.5%	-2.9%	-2.7%
Netflix	3SNF	-1.5%	-0.6%	11.7%	-27.0%	-7.5%	-26.1%
NIO	3SNI	-17.7%	-17.8%	5.9%	-5.9%	6.5%	-28.3%
NVIDIA	3SNV	-1.9%	-3.4%	-3.0%	-8.2%	4.6%	-11.8%
Palantir	3SPA	-7.5%	-13.7%	8.5%	-4.4%	4.7%	-13.3%
PayPal	3SPP	-0.8%	-14.3%	9.3%	7.2%	-5.4%	-5.8%
Spotify	3SPO	1.7%	-5.7%	1.5%	-6.6%	6.3%	-3.4%
Square	3SSQ	-2.0%	-11.9%	18.7%	44.5%	5.9%	56.7%
Tesla	3STS	-5.1%	-23.4%	9.8%	-1.6%	2.9%	-19.3%
UBER	3SUB	-1.3%	-8.7%	12.3%	3.3%	4.2%	8.8%
Zoom	2SZM	-0.2%	-7.3%	8.7%	-1.3%	0.5%	-0.4%

Data and charts

All performance data to 24 March 2023. Data and charts sourced from Bloomberg, unless otherwise indicated.

Weekly performance and moving averages – Underlying E.U. stocks

Underlying Stock	Closing Price 24 March 2023	Weekly change	MA 20d	MA 50d	High – 52w	Low – 52w	Price vs 52w High
Airbus	117.40	0.6%	107.64	119.51	126.04	86.52	-6.9%
AXA	26.64	2.6%	25.44	28.42	30.34	20.34	-12.2%
BNP-Paribas	50.47	-2.3%	51.87	61.20	67.02	40.67	-24.7%
Danone	56.27	3.3%	51.27	52.24	58.14	46.75	-3.2%
Enel	5.39	2.0%	5.04	5.40	6.42	3.96	-16.0%
Eni	12.17	1.9%	12.72	13.73	14.98	10.42	-18.7%
Intesa Sanpaolo	2.26	3.2%	2.03	2.42	2.60	1.58	-13.1%
L'Oréal	398.05	4.7%	350.95	380.72	399.75	300.45	-0.4%
LVMH	813.40	3.3%	694.00	802.53	830.70	535.00	-2.1%
Safran	133.30	3.8%	113.28	132.04	137.58	87.85	-3.1%
Sanofi	97.10	8.1%	88.42	89.46	106.08	76.45	-8.5%
Schneider Electric	142.30	-2.6%	133.58	150.63	159.62	110.02	-10.9%
STMicroelectronics	45.41	0.1%	36.87	44.09	47.47	27.42	-4.4%
Total Energies	51.81	-1.3%	53.68	57.71	60.93	43.26	-15.0%
UniCredit	16.23	2.1%	12.74	17.50	19.77	7.87	-17.9%
Volkswagen	119.00	-1.2%	121.34	128.78	143.20	103.85	-16.9%

3x Long ETP performance E.U. Stocks

Underlying stock	Ticker	20-Mar	21-Mar	22-Mar	23-Mar	24-Mar	1 Week	Last 20 days
Airbus	3LAR	4.7%	7.6%	-1.5%	-2.7%	-6.4%	1.1%	-17.5%
AXA	3LAX	7.3%	12.4%	-2.4%	-3.0%	-6.5%	6.8%	-32.5%
BNP-Paribas	3LBN	5.0%	12.4%	-1.5%	-6.6%	-15.8%	-8.6%	-55.0%
Danone	3LDA	2.1%	2.7%	4.6%	-0.6%	0.8%	10.0%	12.3%
Enel	3LNL	5.6%	5.1%	1.3%	0.1%	-6.3%	5.5%	4.2%
Eni	3LEN	5.1%	6.3%	0.3%	-0.6%	-6.8%	3.8%	-24.2%
Intesa Sanpaolo	3LSP	11.1%	10.5%	-1.6%	-3.1%	-7.3%	8.6%	-34.8%
L'Oréal	3LOR	5.2%	-1.1%	6.4%	2.8%	0.4%	14.3%	16.3%
LVMH	3LLV	6.5%	0.8%	3.0%	2.1%	-2.7%	9.9%	-2.8%
Safran	3LSA	4.6%	8.6%	1.5%	-0.3%	-3.1%	11.4%	-8.0%
Sanofi	3LSN	-1.2%	2.4%	2.2%	16.4%	3.9%	25.1%	24.0%
Schneider Electric	3LSE	2.4%	3.4%	0.8%	1.0%	-15.2%	-8.6%	-24.7%
STMicroelectronics	3LST	0.0%	3.1%	3.4%	5.1%	-11.3%	-0.6%	0.1%
Total Energies	3LTO	4.0%	7.5%	-1.5%	-5.5%	-9.1%	-5.4%	-32.6%
UniCredit	3LCR	7.2%	20.9%	-3.8%	-5.0%	-12.2%	4.0%	-44.7%
Volkswagen	3LVW	-0.6%	7.3%	1.5%	-3.5%	-8.3%	-4.2%	-38.4%

3x Short ETP performance E.U. Stocks

Underlying stock	Ticker	20-Mar	21-Mar	22-Mar	23-Mar	24-Mar	1 Week	Last 20 days
Airbus	3SAR	-4.8%	-7.6%	1.5%	2.6%	6.4%	-2.5%	13.0%
AXA	3SAX	-7.4%	-12.4%	2.3%	3.0%	6.5%	-8.9%	33.4%
BNP-Paribas	3SBN	-5.1%	-12.4%	1.5%	6.6%	15.8%	4.1%	78.3%
Danone	3SDA	-2.2%	-2.7%	-4.7%	0.5%	-0.8%	-9.5%	-12.0%
Enel	3SNL	-5.7%	-5.1%	-1.3%	-0.2%	6.3%	-6.3%	-6.8%
Eni	3SEN	-6.6%	-6.3%	-0.3%	0.6%	6.8%	-6.3%	22.6%
Intesa Sanpaolo	3SSP	-11.2%	-10.5%	1.5%	3.1%	7.3%	-10.8%	34.3%
L'Oréal	3SOR	-5.2%	1.1%	-6.4%	-2.8%	-0.4%	-13.2%	-16.1%
LVMH	3SLV	-6.5%	-0.8%	-3.0%	-2.1%	2.7%	-9.6%	-1.6%
Safran	3SSA	-4.6%	-8.6%	-1.6%	0.3%	3.1%	-11.3%	1.1%
Sanofi	3SSN	1.2%	-2.4%	-2.3%	-16.4%	-3.9%	-22.5%	-22.3%
Schneider Electric	3SSE	-2.4%	-3.5%	-0.8%	-1.0%	15.2%	6.6%	21.6%
STMicroelectronics	3SST	-0.1%	-3.1%	-3.5%	-5.2%	11.3%	-1.3%	-7.6%
TotalEnergies	3STO	-4.0%	-7.5%	0.5%	5.5%	9.1%	2.7%	35.7%
UniCredit	3SCR	-7.3%	-20.9%	3.8%	4.9%	12.2%	-10.4%	37.6%
Volkswagen	3SVW	0.5%	-7.3%	-1.5%	3.5%	8.3%	2.8%	53.6%

Data and charts

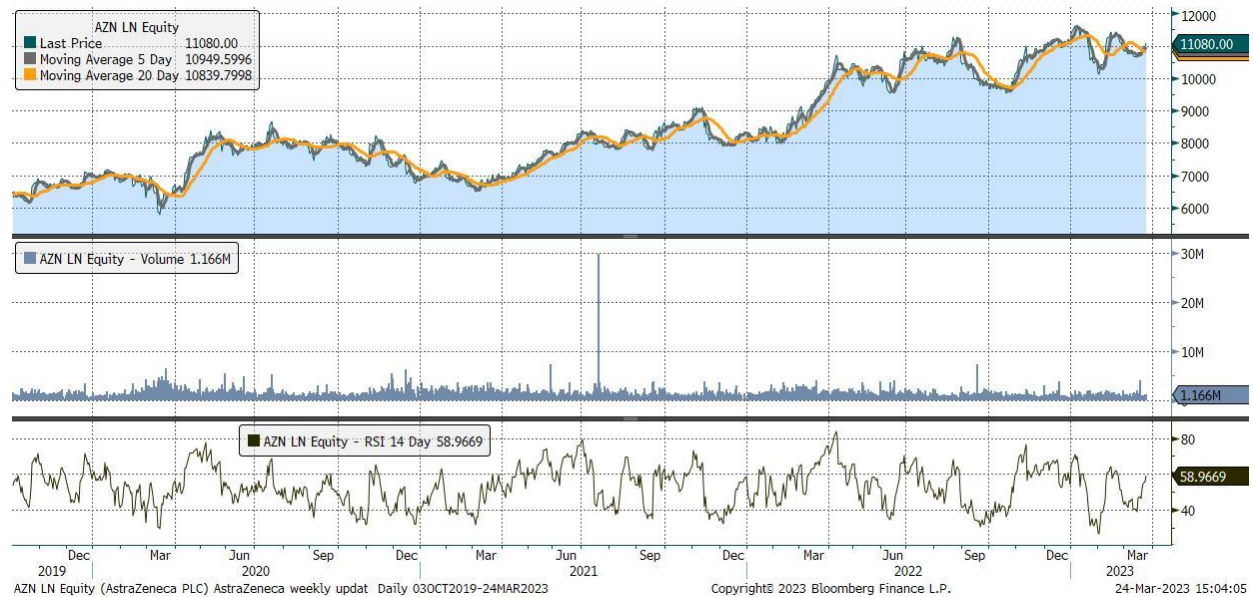
All performance data to 24 March 2023. Data and charts sourced from Bloomberg, unless otherwise indicated.



UK Blue Chips

Company	AstraZeneca (AZN)	AZN Performance	
Listed ETPs	3x Long AstraZeneca Daily ETP (3LAZ)	1 week	2.5%
	3x Short AstraZeneca Daily ETP (3SAZ)	1 month	-2.3%
		YTD	0.2%
Exchange	London Stock Exchange	Price vs 52w high	-6.8%

Chart with moving averages and RSI indicator



Consensus forecasts

	12/31/2023			12/30/2024		
	Net Income	EPS	DPS	Net Income	EPS	DPS
Current	\$11.2 b	\$7.21	\$3.03	\$13.4 b	\$8.58	\$3.17
1 month change	0.2%	-0.3%	0.5%	-0.4%	-0.2%	-0.2%

Source: Bloomberg

Company	BAE Systems (BA.)	BA. Performance	
Listed ETPs	3x Long BAE Systems Daily ETP (3LBA) 3x Short BAE Systems Daily ETP (3SBA)	1 week	7.4%
		1 month	7.9%
		YTD	13.7%
Exchange	London Stock Exchange	Price vs 52w high	-0.7%

Chart with moving averages and RSI indicator



Consensus forecasts

	12/31/2023			12/30/2024		
	Net Income	EPS	DPS	Net Income	EPS	DPS
Current	£1.8 b	\$0.59	\$0.29	£1.9 b	\$0.64	\$0.31
1 month change	2.1%	2.3%	2.9%	1.0%	1.3%	1.0%

Source: Bloomberg

Company	Barclays (BARC)	BARC Performance	
Listed ETPs	3x Long Barclays Daily ETP (3LBC)	1 week	-4.1%
	3x Short Barclays Daily ETP (3SBC)	1 month	-20.2%
		YTD	-13.0%
Exchange	London Stock Exchange	Price vs 52w high	-30.7%

Chart with moving averages and RSI indicator



Consensus forecasts

	12/31/2023			12/30/2024		
	Net Income	EPS	DPS	Net Income	EPS	DPS
Current	\$5.1 b	\$0.32	\$0.09	\$5.4 b	\$0.35	\$0.10
1 month change	-2.6%	-1.5%	6.1%	-3.0%	-2.5%	-5.8%

Source: Bloomberg

Company	BP (BP.)	BP. Performance	
Listed ETPs	3x Long BP Daily TP (3LBP)	1 week	1.3%
	3x Short BP Daily ETP (3SBP)	1 month	-9.8%
Exchange	London Stock Exchange	YTD	3.4%
		Price vs 52w high	-14.8%

Chart with moving averages and RSI indicator

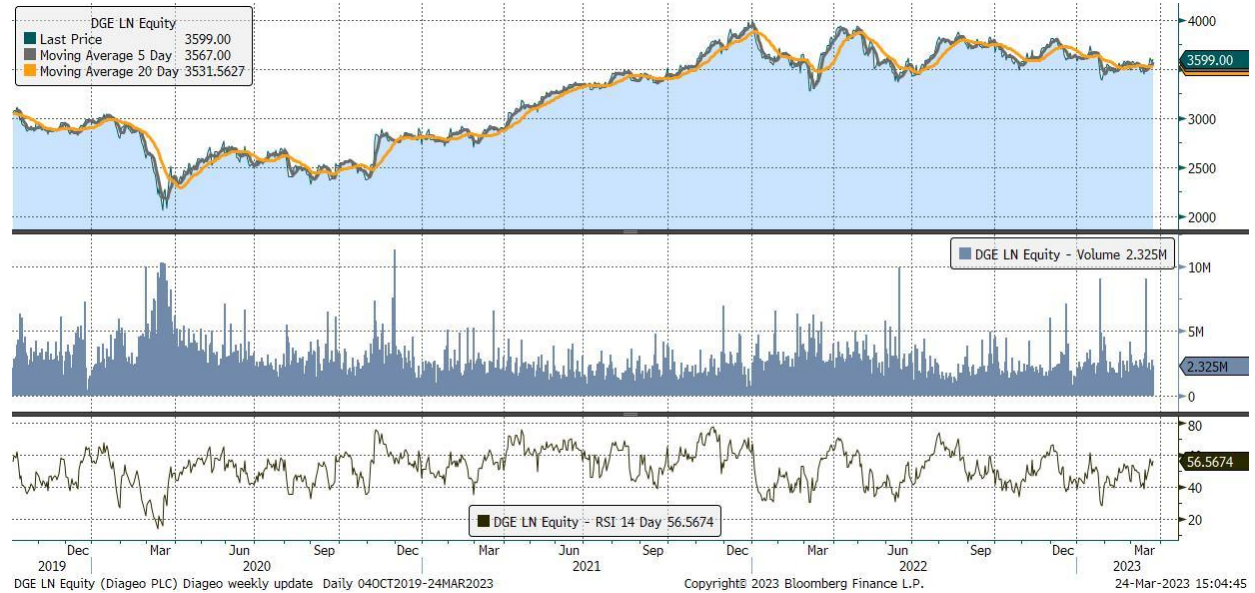


Consensus forecasts

	12/31/2023			12/30/2024		
	Net Income	EPS	DPS	Net Income	EPS	DPS
Current	£18.9 b	\$1.07	\$0.26	£16.4 b	\$1.00	\$0.34
1 month change	-1.2%	-2.5%	2.3%	-0.1%	-12.4%	2.4%

Source: Bloomberg

Company	Diageo (DGE)	DGE Performance	
Listed ETPs	3x Long Diageo Daily ETP (3LDO)	1 week	3.6%
	3x Short Diageo Daily ETP (3SDO)	1 month	0.6%
Exchange	London Stock Exchange	YTD	-0.5%
		Price vs 52w high	-11.5%

Chart with moving averages and RSI indicator

Consensus forecasts

	6/30/2023			6/29/2024		
	Net Income	EPS	DPS	Net Income	EPS	DPS
Current	£3.9 b	\$1.69	\$0.80	£4.1 b	\$1.83	\$0.88
1 month change	-0.2%	0.0%	0.0%	-0.2%	0.0%	0.0%

Source: Bloomberg

Company	Glencore (GLEN)	GLEN Performance	
Listed ETPs	3x Long Glencore Daily ETP (3LGL)	1 week	2.3%
	3x Short Glencore Daily ETP (3SGL)	1 month	-10.4%
		YTD	-19.9%
Exchange	London Stock Exchange	Price vs 52w high	-24.3%

Chart with moving averages and RSI indicator



Consensus forecasts

	12/31/2023			12/30/2024		
	Net Income	EPS	DPS	Net Income	EPS	DPS
Current	\$11.0 b	\$0.91	\$0.54	\$9.8 b	\$0.80	\$0.50
1 month change	-2.4%	0.9%	-6.4%	-4.4%	-2.4%	-1.4%

Source: Bloomberg

Company	Lloyds Banking Group (LLOY)	LLOY Performance	
Listed ETPs	3x Long Lloyds Banking Group Daily ETP (3LLL)	1 week	-1.2%
	3x Short Lloyds Banking Group Daily ETP (3SLL)	1 month	-10.8%
Exchange	London Stock Exchange	YTD	0.7%
		Price vs 52w high	-15.9%

Chart with moving averages and RSI indicator



Consensus forecasts

	12/31/2023			12/30/2024		
	Net Income	EPS	DPS	Net Income	EPS	DPS
Current	£4.9 b	\$0.07	\$0.03	£5.0 b	\$0.08	\$0.03
1 month change	-1.0%	1.4%	3.7%	-3.6%	-2.5%	3.3%

Source: Bloomberg

Company	Rio Tinto (RIO)	RIO Performance	
Listed ETPs	3x Long Rio Tinto Daily ETP (3LRI)	1 week	0.1%
	3x Short Rio Tinto Daily ETP (3SRI)	1 month	-9.4%
Exchange	London Stock Exchange	YTD	-6.5%
		Price vs 52w high	-18.0%

Chart with moving averages and RSI indicator



Consensus forecasts

	12/31/2023			12/30/2024		
	Net Income	EPS	DPS	Net Income	EPS	DPS
Current	\$11.5 b	\$7.29	\$4.54	\$11.2 b	\$7.24	\$4.33
1 month change	0.6%	-2.2%	2.2%	0.0%	-3.1%	-4.3%

Source: Bloomberg

Company	Rolls-Royce Holdings (RR.)	RR. Performance	
Listed ETPs	3x Long Rolls-Royce Daily ETP (3LRR) 3x Short Rolls-Royce Daily ETP (3SRR)	1 week	2.3%
		1 month	33.4%
		YTD	54.0%
Exchange	London Stock Exchange	Price vs 52w high	-10.3%

Chart with moving averages and RSI indicator



Consensus forecasts

	12/31/2023			12/30/2024		
	Net Income	EPS	DPS	Net Income	EPS	DPS
Current	£0.4 b	\$0.05	\$0.00	£0.6 b	\$0.07	\$0.01
1 month change	25.0%	34.3%	0.0%	16.8%	17.5%	50.0%

Source: Bloomberg

Company	Shell Plc (SHEL)	RDSA Performance	
Listed ETPs	3x Long Royal Dutch Shell Daily ETP (3LRD)	1 week	-0.6%
	3x Short Royal Dutch Shell Daily ETP (3SRD)	1 month	-10.2%
Exchange	London Stock Exchange	YTD	-4.5%
		Price vs 52w high	-15.8%

Chart with moving averages and RSI indicator



Consensus forecasts

	12/31/2023			12/30/2024		
	Net Income	EPS	DPS	Net Income	EPS	DPS
Current	\$31.4 b	\$4.60	\$1.17	\$27.7 b	\$4.66	\$1.30
1 month change	-1.6%	-2.6%	1.7%	-1.4%	-7.1%	-0.2%

Source: Bloomberg

Company	Vodafone (VOD)	VOD Performance	
Listed ETPs	3x Long Vodafone Daily ETP (3LVO)	1 week	-2.0%
	3x Short Vodafone Shell Daily ETP (3SVO)	1 month	-11.9%
Exchange	London Stock Exchange	YTD	5.2%
		Price vs 52w high	-33.0%

Chart with moving averages and RSI indicator

Consensus forecasts

	3/31/2023			3/30/2024		
	Net Income	EPS	DPS	Net Income	EPS	DPS
Current	£2.9 b	\$0.10	\$0.09	£2.7 b	\$0.10	\$0.09
1 month change	-1.8%	-1.9%	-1.1%	-3.4%	-4.0%	0.0%

Source: Bloomberg



U.S. Tech Leaders

Company	Alibaba (BABA)	BABA Performance	
Listed ETPs	3x Long Alibaba Daily ETP (3LAA/3LAE/LAA3)	1 week	6.4%
	3x Short Alibaba Daily ETP (3SAA/SAA3/3SAA)	1 month	-8.3%
Exchange	Borsa Italiana	YTD	-1.4%
		Price vs 52w high	-30.9%

Chart with moving averages and RSI indicator



Consensus forecasts

	3/31/2023			3/30/2024		
	Net Income	EPS	CFPS	Net Income	EPS	CFPS
Current	\$139.3 b	\$48.72	\$41.11	\$159.3 b	\$58.49	\$42.50
1 month change	0.1%	-4.7%	-3.4%	-1.6%	-4.4%	-4.7%

Source: Bloomberg

Company	Alphabet (GOOGL)	GOOGL Performance	
Listed ETPs	3x Long Alphabet Daily ETP (3LAL/3LGE/3LGP) 3x Short Alphabet Daily ETP (3SAL/3SGE/3SGP)	1 week	3.8%
Exchanges	London Stock Exchange, Euronext Paris Borsa Italiana	1 month	15.0%
		YTD	19.5%
		Price vs 52w high	-26.7%

Chart with moving averages and RSI indicator



Consensus forecasts

	12/31/2023			12/30/2024		
	Net Income	EPS	CFPS	Net Income	EPS	CFPS
Current	\$69.9 b	\$5.60	\$7.59	\$82.2 b	\$6.68	\$9.04
1 month change	-0.8%	-0.5%	0.0%	-0.6%	-0.7%	0.0%

Source: Bloomberg

Company	Amazon.com (AMZN)	AMZN Performance	
Listed ETPs	3x Long Amazon Daily ETP (3LZN/3LPE/3LZP) 3x Short Amazon Daily ETP (3SZN/3SPE/3SZP)	1 week	-0.8%
Exchanges	London Stock Exchange, Euronext Paris Borsa Italiana	1 month	2.4%
		YTD	16.8%
		Price vs 52w high	-42.6%

Chart with moving averages and RSI indicator



Consensus forecasts

	12/31/2023			12/30/2024		
	Net Income	EPS	CFPS	Net Income	EPS	CFPS
Current	\$27.8 b	\$2.60	\$7.83	\$40.7 b	\$3.75	\$10.17
1 month change	3.7%	-4.4%	-0.2%	3.6%	1.9%	-0.2%

Source: Bloomberg

Company	AMD (AMD)	AMD Performance	
Listed ETPs	3x Long ADM Daily ETP (3LAM/LAM3) 3x Short ADM Daily ETP (3SAM/SAM3)	1 week	0.1%
Exchange	Euronext Paris, Borsa Italiana	1 month	27.9%
		YTD	51.2%
		Price vs 52w high	-22.1%

Chart with moving averages and RSI indicator



Consensus forecasts

	12/31/2023			12/30/2024		
	Net Income	EPS	CFPS	Net Income	EPS	CFPS
Current	\$4.9 b	\$3.04	\$3.11	\$6.8 b	\$4.33	\$4.23
1 month change	2.7%	0.1%	5.4%	0.1%	0.0%	2.4%

Source: Bloomberg

Company	Apple (AAPL)	AAPL Performance	
Listed ETPs	3x Long Apple Daily ETP (3LAP/3LAE/3LWP) 3x Short Apple Daily ETP (3SAP/3SAE/3SWP)	1 week	3.4%
Exchanges	London Stock Exchange, Euronext Paris Borsa Italiana	1 month	7.6%
		YTD	23.5%
		Price vs 52w high	-10.8%

Chart with moving averages and RSI indicator



Consensus forecasts

	9/24/2023			9/23/2024		
	Net Income	EPS	CFPS	Net Income	EPS	CFPS
Current	\$94.1 b	\$5.96	\$6.81	\$101.2 b	\$6.61	\$7.94
1 month change	-0.7%	-1.0%	-1.3%	-0.1%	-0.5%	-2.3%

Source: Bloomberg

Company	Coinbase (COIN)	COIN Performance	
Listed ETPs	3x Long Coinbase Daily ETP (3LCO/LCO3)	1 week	-9.5%
Exchanges	Borsa Italiana, London Stock Exchange	1 month	10.9%
		YTD	91.7%
		Price vs 52w high	-67.2%

Chart with moving averages and RSI indicator



Consensus forecasts

	12/31/2023			12/30/2024		
	Net Income	EPS	CFPS	Net Income	EPS	CFPS
Current	-\$0.9 b	-\$4.08	\$0.60	-\$0.5 b	-\$2.13	\$1.38
1 month change	-1.6%	-6.0%	0.0%	-4.0%	-11.8%	0.0%

Source: Bloomberg

Company	Meta Platforms (META)	META Performance	
Listed ETPs	3x Long Facebook Daily ETP (3LFB/3LFE/3LFP)	1 week	5.3%
	3x Short Facebook Daily ETP (3SFB/3SFE/3SFP)	1 month	20.4%
Exchanges	London Stock Exchange, Euronext Paris	YTD	71.2%
	Borsa Italiana	Price vs 52w high	-13.0%

Chart with moving averages and RSI indicator



Consensus forecasts

	12/31/2023			12/30/2024		
	Net Income	EPS	CFPS	Net Income	EPS	CFPS
Current	\$27.9 b	\$12.09	\$19.65	\$33.6 b	\$14.89	\$24.35
1 month change	3.8%	5.9%	0.1%	6.3%	5.6%	0.2%

Source: Bloomberg

Company	Microsoft (MSFT)	MSFT Performance	
Listed ETPs	3x Long Microsoft Daily ETP (3LMS/3LME/3LMP) 3x Short Microsoft Daily ETP (3SMS/3SME/3SMP)	1 week	0.4%
Exchanges	London Stock Exchange, Euronext Paris Borsa Italiana	1 month	11.6%
		YTD	17.3%
		Price vs 52w high	-11.2%

Chart with moving averages and RSI indicator



Consensus forecasts

	6/30/2023			6/29/2024		
	Net Income	EPS	CFPS	Net Income	EPS	CFPS
Current	\$69.5 b	\$9.32	\$11.55	\$80.1 b	\$10.75	\$13.89
1 month change	0.0%	0.1%	0.0%	0.0%	0.0%	0.0%

Source: Bloomberg

Company	MicroStrategy (MSTR)	MSTR Performance	
Listed ETPs	3x Long MicroStrategy Daily ETP (3LMI/3LMI/3LMI) 3x Short MicroStrategy Daily ETP (3SMI/3SME/3SMP)	1 week	-4.1%
Exchanges	Borsa Italiana	1 month	-4.4%
		YTD	81.3%
		Price vs 52w high	-50.9%

Chart with moving averages and RSI indicator



Consensus forecasts

	12/31/2023			12/30/2024		
	Net Income	EPS	CFPS	Net Income	EPS	CFPS
Current	\$0.0 b	\$0.93	-	\$0.0 b	\$0.62	-
1 month change	-	-	-	0.0%	6.3%	-

Source: Bloomberg

Company	Moderna (MRNA)	MRNA Performance	
Listed ETPs	3x Long Moderna Daily ETP (3LMO/MOL3)	1 week	0.6%
	3x Short Moderna Daily ETP (3SMO/SOL3)	1 month	-4.6%
Exchange	Euronext Paris, Borsa Italiana	YTD	-16.0%
		Price vs 52w high	-30.5%

Chart with moving averages and RSI indicator



Consensus forecasts

	12/31/2023			12/30/2024		
	Net Income	EPS	CFPS	Net Income	EPS	CFPS
Current	-\$0.8 b	-\$2.35	-\$1.59	-\$1.4 b	-\$3.68	-\$1.62
1 month change	3372.9%	-504.9%	162.9%	-64.6%	-66.4%	284.1%

Source: Bloomberg

Company	Netflix (NFLX)	NFLX Performance	
Listed ETPs	3x Long Netflix Daily ETP (3LNF/3LNE/3LNP) 3x Short Netflix Daily ETP (3SNF/3SNE/3SNP)	1 week	8.2%
Exchange	London Stock Exchange, Euronext Paris Borsa Italiana	1 month	-1.9%
		YTD	11.4%
		Price vs 52w high	-17.2%

Chart with moving averages and RSI indicator



Consensus forecasts

	12/31/2023			12/30/2024		
	Net Income	EPS	CFPS	Net Income	EPS	CFPS
Current	\$5.5 b	\$12.37	\$11.23	\$6.8 b	\$15.17	\$16.49
1 month change	0.9%	0.0%	0.0%	-0.2%	0.0%	0.0%

Source: Bloomberg

Company	NIO Inc (NIO)	NIO Performance	
Listed ETPs	3x Long NIO Daily ETP (3LNI/3LIE/3LIP) 3x Short NIO Daily ETP (3SNI/3SIE/3SIP)	1 week	9.8%
Exchange	London Stock Exchange, Euronext Paris Borsa Italiana	1 month	-10.9%
		YTD	-7.0%
		Price vs 52w high	-62.9%

Chart with moving averages and RSI indicator



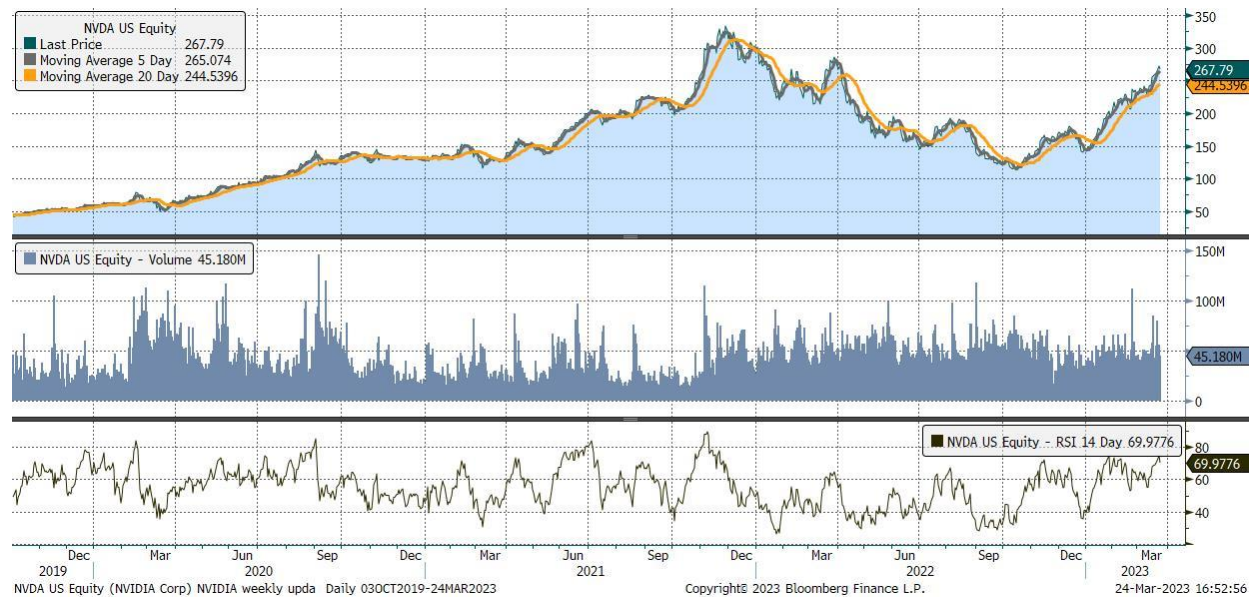
Consensus forecasts

	12/31/2023			12/30/2024		
	Net Income	EPS	CFPS	Net Income	EPS	CFPS
Current	-\$10.3 b	-\$5.91	-\$0.49	-\$2.3 b	-\$1.41	\$3.26
1 month change	-40.1%	-30.5%	135.1%	-91.8%	-63.6%	8.4%

Source: Bloomberg

Company	NVIDIA (NVDA)	NVDA Performance	
Listed ETPs	3x Long NVIDIA Daily ETP (3LNV/3LVE/3LVP) 3x Short NVIDIA Daily ETP (3SNV/3SVE/3SVP)	1 week	4.1%
Exchange	London Stock Exchange, Euronext Paris	1 month	29.1%
	Borsa Italiana	YTD	83.3%
		Price vs 52w high	-7.4%

Chart with moving averages and RSI indicator



Consensus forecasts

	1/29/2024			1/28/2025		
	Net Income	EPS	CFPS	Net Income	EPS	CFPS
Current	\$10.8 b	\$4.39	\$4.77	\$14.4 b	\$5.78	\$6.37
1 month change	2.1%	-1.2%	1.7%	2.3%	-0.8%	2.3%

Source: Bloomberg

Company	Palantir (PLTR)	PLTR Performance	
Listed ETPs	3x Long Palantir Daily ETP (3LPA/PAL3)	1 week	4.1%
	3x Short Palantir Daily ETP (3SPA/SPL3)	1 month	-1.9%
Exchange	Euronext Paris, Borsa Italiana	YTD	27.7%
	London Stock Exchange	Price vs 52w high	-44.8%

Chart with moving averages and RSI indicator



Consensus forecasts

	12/31/2023			12/30/2024		
	Net Income	EPS	CFPS	Net Income	EPS	CFPS
Current	\$0.5 b	\$0.20	\$0.16	\$0.6 b	\$0.24	\$0.21
1 month change	0.2%	0.0%	0.0%	0.1%	0.4%	0.0%

Source: Bloomberg

Company	PayPal (PYPL)	PYPL Performance	
Listed ETPs	3x Long PayPal Daily ETP (3LPP/LPP3) 3x Short PayPal Daily ETP (3SPP/SPP3)	1 week	1.2%
Exchange	Borsa Italiana, London Stock Exchange	1 month	-2.2%
		YTD	3.6%
		Price vs 52w high	-39.9%

Chart with moving averages and RSI indicator



Consensus forecasts

	12/31/2023			12/30/2024		
	Net Income	EPS	CFPS	Net Income	EPS	CFPS
Current	\$5.5 b	\$4.88	\$6.58	\$6.2 b	\$5.63	\$7.86
1 month change	-0.1%	0.0%	-0.1%	-0.2%	0.2%	-0.1%

Source: Bloomberg

Company	Spotify (SPOT)	SPOT Performance	
Listed ETPs	3x Long Spotify Daily ETP (3LPO/LPO3) 3x Short Spotify Daily ETP (3SPO/SPO3)	1 week	1.0%
Exchange	Borsa Italiana, London Stock Exchange	1 month	6.9%
		YTD	62.5%
		Price vs 52w high	-19.8%

Chart with moving averages and RSI indicator



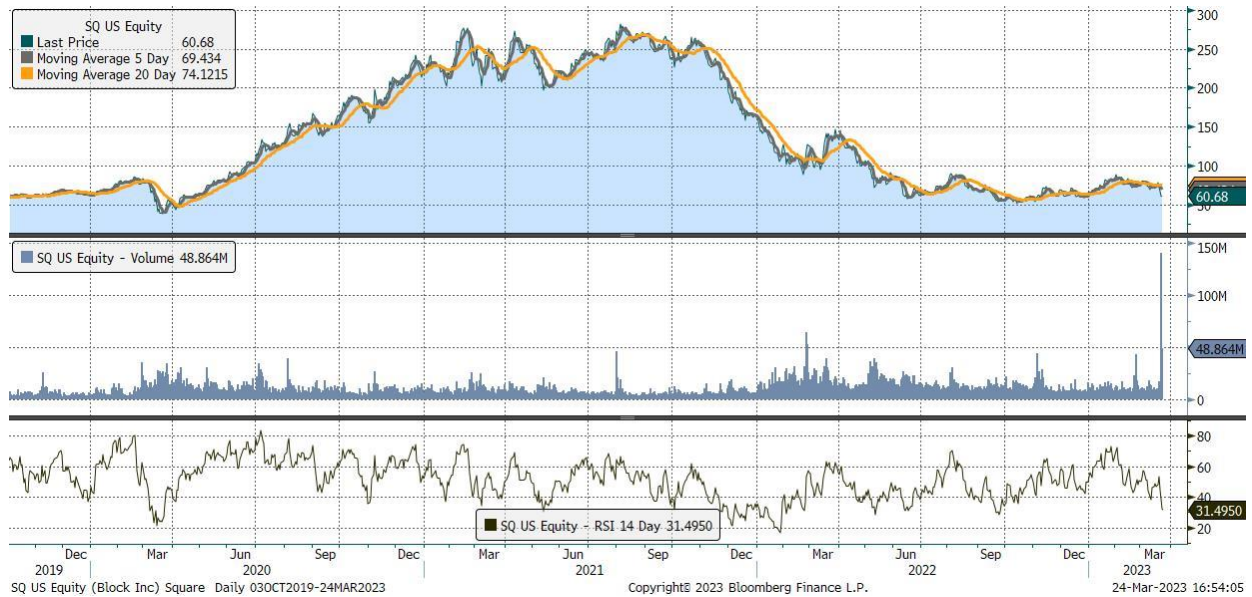
Consensus forecasts

	12/31/2023			12/30/2024		
	Net Income	EPS	CFPS	Net Income	EPS	CFPS
Current	-\$0.4 b	-\$1.82	\$0.61	\$0.0 b	\$0.09	\$1.79
1 month change	1.2%	5.2%	0.0%	-222.4%	-257.4%	0.0%

Source: Bloomberg

Company	Square (SQ)	SQ Performance	
Listed ETPs	3x Long Square Daily ETP (3LSQ/LSQ3)	1 week	-18.0%
	3x Short Square Daily ETP (3SSQ/SSQ3)	1 month	-16.8%
Exchange	Borsa Italiana, London Stock Exchange	YTD	-3.4%
		Price vs 52w high	-59.3%

Chart with moving averages and RSI indicator



Consensus forecasts

	12/31/2023			12/30/2024		
	Net Income	EPS	CFPS	Net Income	EPS	CFPS
Current	\$0.9 b	\$1.68	\$2.36	\$1.4 b	\$2.41	\$3.15
1 month change	-3.5%	4.5%	0.0%	-5.0%	2.1%	0.0%

Source: Bloomberg

Company	Tesla (TSLA)	TSLA Performance	
Listed ETPs	3x Long Tesla Daily ETP (3LTS/3LTE /3LTP) 3x Short Tesla Daily ETP (3STS/3STE/3STP)	1 week	5.7%
Exchange	London Stock Exchange, Euronext Paris Borsa Italiana	1 month	-5.2%
		YTD	54.6%
		Price vs 52w high	-50.4%

Chart with moving averages and RSI indicator



Consensus forecasts

	12/31/2023			12/30/2024		
	Net Income	EPS	CFPS	Net Income	EPS	CFPS
Current	\$13.6 b	\$3.99	\$5.02	\$19.7 b	\$5.62	\$8.05
1 month change	1.2%	1.7%	0.0%	0.9%	-0.4%	0.0%

Source: Bloomberg

Company	Uber Technologies (UBER)	UBER Performance	
Listed ETPs	3x Long Uber Daily ETP (3LUB/3LUE/3LUP) 3x Short Uber Daily ETP (3SUB/3SUE/3SUP)	1 week	-3.2%
Exchange	London Stock Exchange, Euronext Paris Borsa Italiana	1 month	-11.0%
		YTD	24.3%
		Price vs 52w high	-18.0%

Chart with moving averages and RSI indicator



Consensus forecasts

	12/31/2023			12/30/2024		
	Net Income	EPS	CFPS	Net Income	EPS	CFPS
Current	\$0.7 b	\$0.31	\$1.30	\$2.5 b	\$1.11	\$2.29
1 month change	-10.5%	4.5%	0.0%	-4.5%	-2.2%	0.0%

Source: Bloomberg

Company	Zoom (ZM)	ZM Performance	
Listed ETPs	2x Long Zoom Daily ETP (2LZM/LZM2)	1 week	-0.3%
	2x Short Zoom Daily ETP (2SZM/SZM2)	1 month	-6.0%
Exchange	Borsa Italiana, London Stock Exchange	YTD	1.8%
		Price vs 52w high	-45.8%

Chart with moving averages and RSI indicator



Consensus forecasts

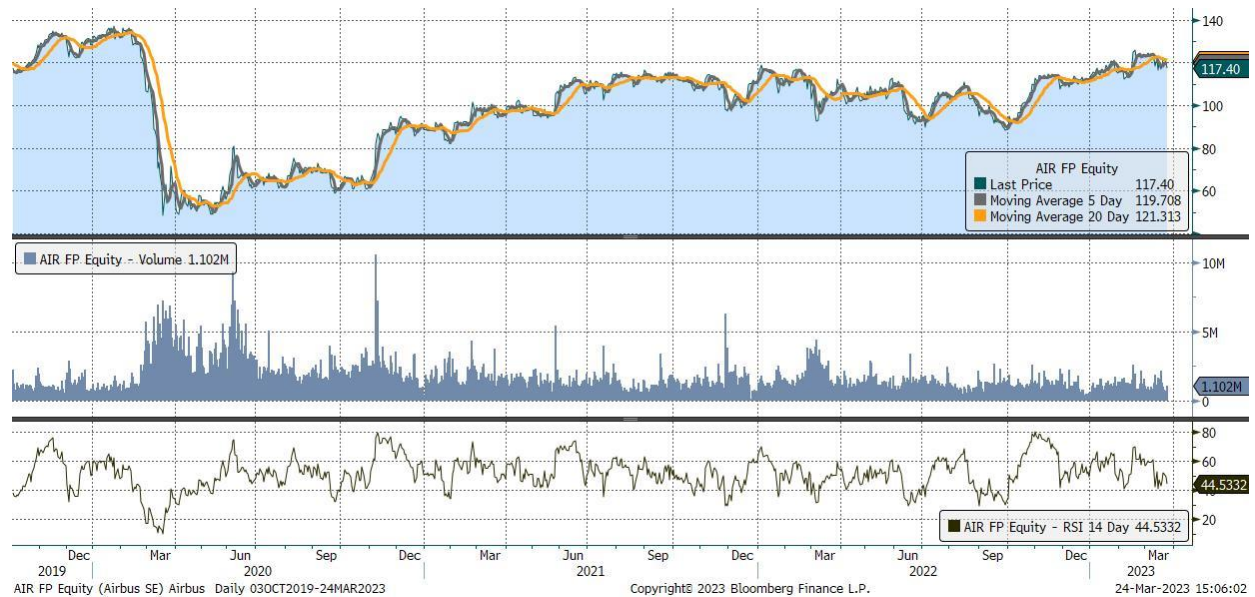
	1/31/2024			1/30/2025		
	Net Income	EPS	CFPS	Net Income	EPS	CFPS
Current	\$1.3 b	\$4.19	\$5.12	\$1.3 b	\$4.32	\$5.40
1 month change	20.2%	20.8%	-	12.0%	12.6%	0.0%

Source: Bloomberg



E.U Stocks

Company	Airbus (AIR)	AIR Performance	
Listed ETPs	3x Long Airbus Daily ETP (3LAR/LAR3)	1 week	0.6%
	3x Short Airbus Daily ETP (3SAR/SAR3)	1 month	-5.7%
Exchange	Euronext Paris, London Stock Exchange	YTD	5.7%
		Price vs 52w high	-6.9%

Chart with moving averages and RSI indicator

Consensus forecasts

	12/31/2023			12/30/2024		
	Net Income	EPS	DPS	Net Income	EPS	DPS
Current	€4.4 b	€5.61	€2.06	€5.5 b	€7.04	€2.55
1 month change	-0.2%	-0.1%	-0.8%	-0.3%	-0.4%	-0.4%

Source: Bloomberg

Company	AXA (CS)	CS Performance	
Listed ETPs	3x Long AXA Daily ETP (3LAX)	1 week	2.6%
	3x Short AXA Daily ETP (3SAX)	1 month	-7.2%
Exchange	Euronext Paris	YTD	2.2%
		Price vs 52w high	-12.2%

Chart with moving averages and RSI indicator



Consensus forecasts

	12/31/2023			12/30/2024		
	Net Income	EPS	DPS	Net Income	EPS	DPS
Current	€7.7 b	€3.40	€1.82	€8.1 b	€3.64	€1.95
1 month change	-0.2%	0.5%	2.8%	-0.1%	0.9%	1.2%

Source: Bloomberg

Company	BNP Paribas (BNP)	BNP Performance	
Listed ETPs	3x Long BNP Daily ETP (3LBN)	1 week	-2.3%
	3x Short BNP Daily ETP (3SBN)	1 month	-22.1%
Exchange	Euronext Paris	YTD	-5.2%
		Price vs 52w high	-24.7%

Chart with moving averages and RSI indicator



Consensus forecasts

	12/31/2023			12/30/2024		
	Net Income	EPS	DPS	Net Income	EPS	DPS
Current	€9.3 b	€8.60	€4.28	€10.6 b	€9.33	€4.72
1 month change	0.8%	3.0%	1.5%	1.4%	1.5%	0.5%

Source: Bloomberg

Company	Danone (BN)	BN Performance	
Listed ETPs	3x Long Danone Daily ETP (3LDA)	1 week	3.3%
	3x Short Danone Daily ETP (3SDA)	1 month	4.4%
Exchange	Euronext Paris	YTD	14.3%
		Price vs 52w high	-3.2%

Chart with moving averages and RSI indicator

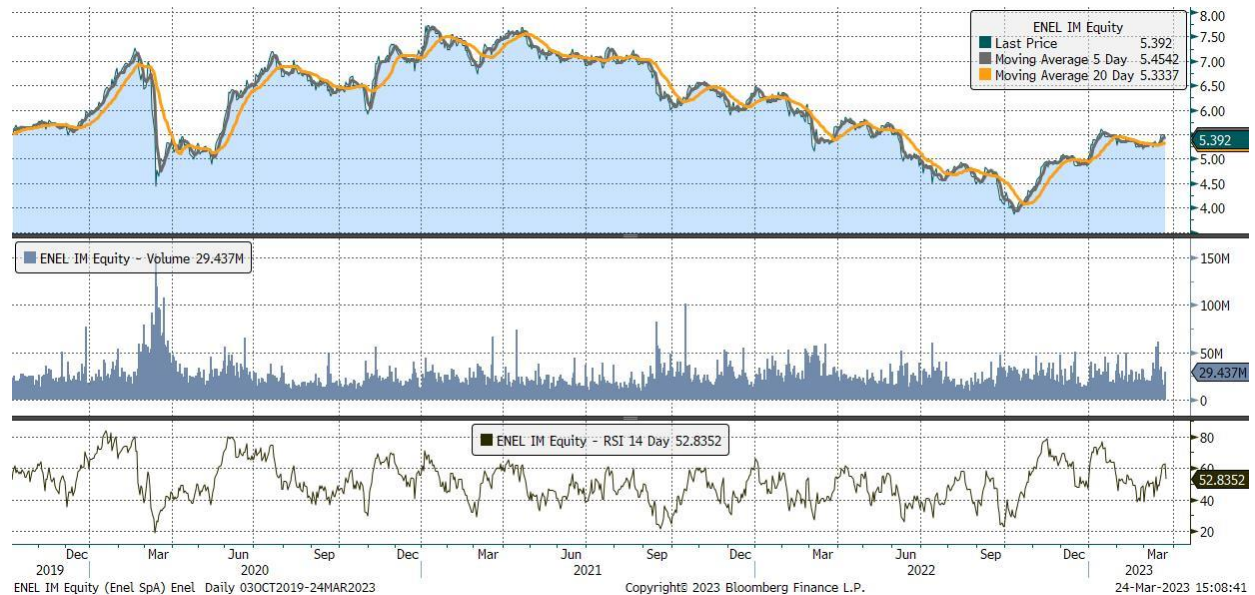
Consensus forecasts

	12/31/2023			12/30/2024		
	Net Income	EPS	DPS	Net Income	EPS	DPS
Current	€2.2 b	€3.47	€2.08	€2.4 b	€3.72	€2.23
1 month change	0.0%	0.4%	1.8%	0.2%	0.5%	1.0%

Source: Bloomberg

Company	Enel (ENEL)	ENEL Performance	
Listed ETPs	3x Long Enel Daily ETP (3LNL)	1 week	2.0%
	3x Short Enel Daily ETP (3SNL)	1 month	2.5%
Exchange	Borsa Italiana	YTD	11.1%
		Price vs 52w high	-16.0%

Chart with moving averages and RSI indicator



Consensus forecasts

	12/31/2023			12/30/2024		
	Net Income	EPS	DPS	Net Income	EPS	DPS
Current	€5.9 b	€0.59	€0.42	€6.3 b	€0.62	€0.43
1 month change	0.4%	0.3%	0.5%	0.2%	0.2%	0.0%

Source: Bloomberg

Company	Eni (ENI)	ENI Performance	
Listed ETPs	3x Long Eni Daily ETP (3LEN)	1 week	1.9%
	3x Short Eni Daily ETP (3SEN)	1 month	-7.2%
Exchange	Borsa Italiana	YTD	-6.7%
		Price vs 52w high	-18.7%

Chart with moving averages and RSI indicator



Consensus forecasts

	12/31/2023			12/30/2024		
	Net Income	EPS	DPS	Net Income	EPS	DPS
Current	€9.1 b	€2.75	€0.92	€7.4 b	€2.32	€0.93
1 month change	-1.3%	-1.0%	6.4%	0.5%	1.2%	3.6%

Source: Bloomberg

Company	Intesa Sanpaolo (ISP)	ISP Performance	
Listed ETPs	3x Long Intesa Sanpaolo Daily ETP (3LSP)	1 week	3.2%
	3x Short Intesa Sanpaolo Daily ETP (3SSP)	1 month	-10.0%
Exchange	Borsa Italiana	YTD	8.9%
		Price vs 52w high	-13.1%

Chart with moving averages and RSI indicator



Consensus forecasts

	12/31/2023			12/30/2024		
	Net Income	EPS	DPS	Net Income	EPS	DPS
Current	€6.2 b	€0.34	€0.24	€6.6 b	€0.36	€0.25
1 month change	0.5%	0.3%	0.9%	0.6%	0.0%	0.4%

Source: Bloomberg

Company	L'Oréal (OR)	OR Performance	
Listed ETPs	3x Long L'Oréal Daily ETP (3LOR)	1 week	4.7%
	3x Short L'Oréal Daily ETP (3SOR)	1 month	3.6%
Exchange	Euronext Paris	YTD	19.3%
		Price vs 52w high	-0.4%

Chart with moving averages and RSI indicator



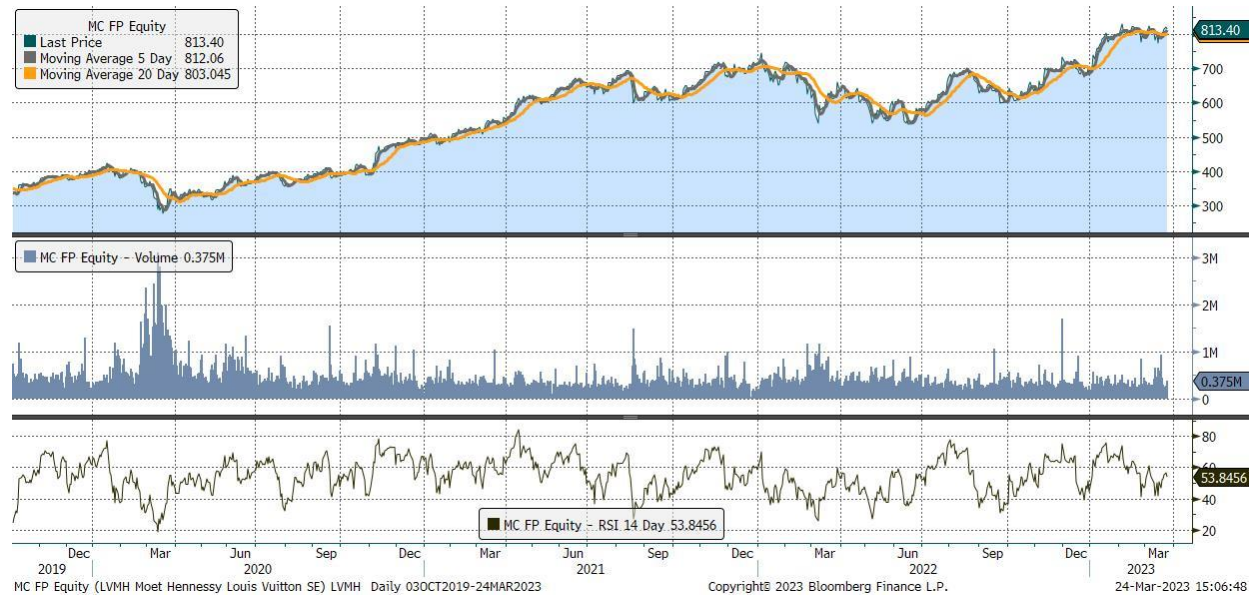
Consensus forecasts

	12/31/2023			12/30/2024		
	Net Income	EPS	DPS	Net Income	EPS	DPS
Current	€6.3 b	€11.80	€6.32	€6.9 b	€12.89	€6.94
1 month change	0.5%	-0.1%	3.5%	0.1%	-0.1%	2.3%

Source: Bloomberg

Company	LVMH (MC)	MC Performance	
Listed ETPs	3x Long LVMH Daily ETP (3LLV)	1 week	3.3%
	3x Short LVMH Daily ETP (3SLV)	1 month	0.5%
Exchange	Euronext Paris	YTD	19.6%
		Price vs 52w high	-2.1%

Chart with moving averages and RSI indicator



Consensus forecasts

	12/31/2023			12/30/2024		
	Net Income	EPS	DPS	Net Income	EPS	DPS
Current	€16.0 b	€31.72	€13.73	€17.7 b	€35.16	€15.11
1 month change	0.4%	0.0%	3.8%	0.8%	0.6%	1.1%

Source: Bloomberg

Company	Safran (SAF)	SAF Performance	
Listed ETPs	3x Long Safran Daily ETP (3LSA)	1 week	3.8%
	3x Short Safran Daily ETP (3SSA)	1 month	-1.1%
Exchange	Euronext Paris	YTD	14.0%
		Price vs 52w high	-3.1%

Chart with moving averages and RSI indicator

Consensus forecasts

	12/31/2023			12/30/2024		
	Net Income	EPS	DPS	Net Income	EPS	DPS
Current	€2.1 b	€5.04	€2.04	€2.7 b	€6.38	€2.57
1 month change	-2.4%	1.2%	2.8%	-1.6%	2.1%	1.8%

Source: Bloomberg

Company	Sanofi (SAN)	SAN Performance	
Listed ETPs	3x Long Sanofi Daily ETP (3LSN)	1 week	8.1%
	3x Short Sanofi Daily ETP (3SSN)	1 month	7.8%
Exchange	Euronext Paris	YTD	8.1%
		Price vs 52w high	-8.5%

Chart with moving averages and RSI indicator



Consensus forecasts

	12/31/2023			12/30/2024		
	Net Income	EPS	DPS	Net Income	EPS	DPS
Current	€10.3 b	€8.20	€3.68	€11.3 b	€9.00	€3.88
1 month change	-0.3%	-0.9%	0.2%	0.4%	0.2%	0.3%

Source: Bloomberg

Company	Schneider Electric (SU)	SU Performance	
Listed ETPs	3x Long Schneider Electric Daily ETP (3LSE)	1 week	-2.6%
	3x Short Schneider Electric Daily ETP (3SSE)	1 month	-7.9%
Exchange	Euronext Paris	YTD	8.9%
		Price vs 52w high	-10.9%

Chart with moving averages and RSI indicator



Consensus forecasts

	12/31/2023			12/30/2024		
	Net Income	EPS	DPS	Net Income	EPS	DPS
Current	€4.4 b	€7.77	€3.44	€4.7 b	€8.46	€3.67
1 month change	0.5%	0.6%	1.3%	1.0%	1.0%	1.9%

Source: Bloomberg

Company	STMicroelectronics (STMPA)	STM Performance	
Listed ETPs	3x Long STMicroelectronics Daily ETP (3LST) 3x Short STMicroelectronics Daily ETP (3SST)	1 week	0.1%
		1 month	0.5%
		YTD	37.8%
Exchange	Euronext Paris	Price vs 52w high	-4.4%

Chart with moving averages and RSI indicator



Consensus forecasts

	12/31/2023			12/30/2024		
	Net Income	EPS	DPS	Net Income	EPS	DPS
Current	\$3.8 b	\$4.09	\$0.29	\$4.0 b	\$4.34	\$0.29
1 month change	1.1%	1.0%	0.0%	1.4%	1.0%	3.9%

Source: Bloomberg

Company	TotalEnergies (TTE)	TTE Performance	
Listed ETPs	3x Long TotalEnergies Daily ETP (3LTE)	1 week	-1.3%
	3x Short TotalEnergies Daily ETP (3STE)	1 month	-11.2%
Exchange	Euronext Paris	YTD	-9.5%
		Price vs 52w high	-15.0%

Chart with moving averages and RSI indicator



Consensus forecasts

	12/31/2023			12/30/2024		
	Net Income	EPS	DPS	Net Income	EPS	DPS
Current	€25.0 b	€10.28	€3.04	€21.3 b	€8.98	€3.05
1 month change	-1.8%	-1.3%	2.3%	0.1%	0.4%	1.7%

Source: Bloomberg

Company	UniCredit (UCG)	UCG Performance	
Listed ETPs	3x Long UniCredit Daily ETP (3LTE)	1 week	2.1%
	3x Short UniCredit Daily ETP (3STE)	1 month	-12.0%
Exchange	Borsa Italiana	YTD	22.3%
		Price vs 52w high	-17.9%

Chart with moving averages and RSI indicator



Consensus forecasts

	12/31/2023			12/30/2024		
	Net Income	EPS	DPS	Net Income	EPS	DPS
Current	€5.0 b	€2.77	€1.02	€5.3 b	€3.18	€1.16
1 month change	0.1%	0.5%	-1.1%	-0.2%	-0.9%	-0.1%

Source: Bloomberg

Company	Volkswagen (VOW3)	VOW3 Performance	
Listed ETPs	3x Long Volkswagen Daily ETP (3LVW/LVW3)	1 week	-1.2%
	3x Short Volkswagen Daily ETP (3SVW/SVW3)	1 month	-9.8%
		YTD	2.2%
Exchange	Euronext Paris, London Stock Exchange	Price vs 52w high	-16.9%

Chart with moving averages and RSI indicator



Consensus forecasts

	12/31/2023			12/30/2024		
	Net Income	EPS	DPS	Net Income	EPS	DPS
Current	€15.2 b	€30.61	€8.53	€16.3 b	€31.74	€8.92
1 month change	2.5%	4.7%	-2.0%	2.1%	3.2%	2.0%

Source: Bloomberg

Feedback and comments: please send to graniteshares@europe.com

General Notice

For professional clients and eligible counterparties only.

GraniteShares Limited is an appointed representative of Messels Limited which is authorised and regulated by the Financial Conduct Authority.

This document does not constitute an offer to buy or sell or a solicitation of an offer to buy securities in any company. This document is not intended for distribution to any other country where such distribution or use would be contrary to local law or regulation. Specifically, this document is not intended for general distribution in the United States or Canada.

Investing in financial markets involves a substantial degree of risk. Nothing described herein is intended to imply that an investment is “safe”, “conservative”, “risk free” or “risk averse”. This document does not consider the specific investment objective, financial situation or particular needs of any potential investor and is intended only for those investors who are capable of understanding the risk of loss of all or a substantial part of their monies. Potential investors in the UK are reminded that they will not benefit from the UK investors compensation scheme. Nothing contained herein constitutes investment, legal, tax or other advice nor is to be relied upon in making an investment or other decision. No recommendation is made positive or otherwise, regarding individual securities or investments mentioned herein. Any summary list of risk factors does not purport to be a complete enumeration or explanation of the risks involved in an investment in short and leveraged products. Prospective investors must consult with their own legal, tax and financial advisers before deciding to invest.

This document contains the opinions of the author, and such opinions are subject to change without notice. The source of data is GraniteShares unless otherwise stated. No guarantee is made to the accuracy of the information provided which has been obtained from sources believed to be reliable. This document and the information contained herein is intended only for the use of persons (or entities they represent) to whom it has been provided.

Risk Factors

An investment in a GraniteShares short and leveraged exchange traded product (“ETP”) may not be suitable for all investors. They are intended for investors who wish to take a very short-term view on the underlying asset and are not intended as buy and hold investments.

Performance and capital loss: Past performance is not a reliable indicator of future results. The value of an investment may go down as well as up and can result in losses, up to and including a total loss of the amount initially invested.

Generic risks: Investments in ETPs involve numerous risks including, among others, company risks, general market risks, credit risks, foreign exchange risks, interest rate risks, geopolitical risks and liquidity risks.

Specific product risks: The Index is constructed to track the performance of an increased (leveraged) and/or short exposure to the underlying asset. A fall (or rise where short and leveraged exposure) in value of the underlying asset can result in a greater reduction in the level of the Index. The Index is designed to do this on a daily basis only which should not be equated with seeking a leveraged position for periods longer than a day. The ETP’s performance over periods longer than one day will not be correlated or symmetrical with the returns of the underlying asset. Potential investors should refer to the section entitled “Risk Factors” and “Economic Overview of the ETP Securities” in the Prospectus relating to the GraniteShares ETPs for further details of these and other risks associated with an investment in short and leveraged ETPs and consult their financial advisers as needed.

Counterparty risk: An investment in a GraniteShares short and leveraged ETP involves counterparty risk. GraniteShares Financial plc has entered into a Swap Agreement with a counterparty, Natixis, that is backed with collateral. Failure of the counterparty to make payments may result in an investment in an ETP suffering a loss.

Index Disclaimer

The Index is created, calculated and published by Solactive AG. No financial instrument is sponsored, promoted, sold or supported in any other manner by Solactive AG nor does Solactive AG offer any express or implicit guarantee or assurance either with regard to the results of using the Index and/or Index trademark or the Index level at any time or in any other respect.